



SH3G1 rabbit pAb

Cat No.:ES13128

For research use only

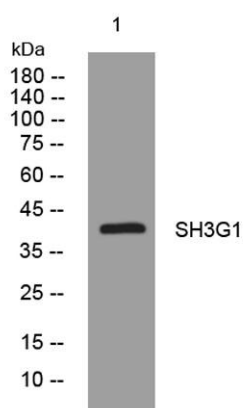
Overview

Product Name	SH3G1 rabbit pAb
Host species	Rabbit
Applications	WB
Species Cross-Reactivity	Human; Mouse;Rat
Recommended dilutions	WB 1: 500-2000
Immunogen	Synthesized peptide derived from human SH3G1 AA range: 112-162
Specificity	This antibody detects endogenous levels of SH3G1 at Human/Mouse/Rat
Formulation	Liquid in PBS containing 50% glycerol, 0.5% BSA and 0.02% sodium azide.
Storage	Store at -20°C. Avoid repeated freeze-thaw cycles.
Protein Name	SH3G1
Gene Name	SH3GL1 CNSA1 SH3D2B
Cellular localization	Cytoplasm . Early endosome membrane ; Peripheral membrane protein . Cell projection, podosome . Associated with postsynaptic endosomes in hippocampal neurons. .
Purification	The antibody was affinity-purified from rabbit antiserum by affinity-chromatography using epitope-specific immunogen.
Clonality	Polyclonal
Concentration	1 mg/ml
Observed band	
Human Gene ID	6455
Human Swiss-Prot Number	Q99961
Alternative Names	
Background	This gene encodes a member of the endophilin family of Src homology 3 domain-containing proteins. The encoded protein is involved in endocytosis and may also play a role in the cell cycle. Overexpression of this gene may play a role in leukemogenesis, and the encoded protein has been





implicated in acute myeloid leukemia as a fusion partner of the myeloid-lymphoid leukemia protein. Pseudogenes of this gene are located on the long arm of chromosomes 11 and 17. Alternatively spliced transcript variants encoding multiple isoforms have been observed for this gene. [provided by RefSeq, Jan 2011],



Western blot analysis of lysates from Jarkat cells, primary antibody was diluted at 1:1000, 4°over night

