



# PDGF Receptor $\alpha$ (phospho-Tyr1018) rabbit pAb

Cat No.:ES14184

For research use only

## Overview

|                          |   |
|--------------------------|---|
| Product Name             | PDGF Receptor $\alpha$ (phospho-Tyr1018) rabbit pAb   |
| Host species             | Rabbit  |
| Applications             | WB;ELISA;IHC  |
| Species Cross-Reactivity | Human;Mouse   |
| Recommended dilutions    | WB 1:500-2000;IHC-p 1:50-300; ELISA 2000-20000  |
| Immunogen                | Synthesized phospho peptide around human PDGF Receptor $\alpha$ (Tyr1018)   |
| Specificity              | This antibody detects endogenous levels of Human Mouse PDGF Receptor $\alpha$ (phospho-Tyr1018)   |
| Formulation              | Liquid in PBS containing 50% glycerol, 0.5% BSA and 0.02% sodium azide.   |
| Storage                  | Store at -20°C. Avoid repeated freeze-thaw cycles.  |
| Protein Name             | PDGF Receptor $\alpha$ (Tyr1018)  |
| Gene Name                | PDGFRA PDGFR2 RHEPDGFRA   |
| Cellular localization    | Cell membrane ; Single-pass type I membrane protein . Cell projection, cilium . Golgi apparatus .   |
| Purification             | The antibody was affinity-purified from rabbit antiserum by affinity-chromatography using epitope-specific immunogen.   |
| Clonality                | Polyclonal  |
| Concentration            | 1 mg/ml   |
| Observed band            | 180kD   |
| Human Gene ID            | 5156  |
| Human Swiss-Prot Number  | P16234  |
| Alternative Names        | Platelet-derived growth factor receptor alpha (PDGF-R-alpha) (PDGFR-alpha) (EC 2.7.10.1) (Alpha platelet-derived growth factor receptor) (Alpha-type platelet-derived growth factor receptor) (CD140 antigen-like family member A) (CD140a antigen) (Platelet-d |

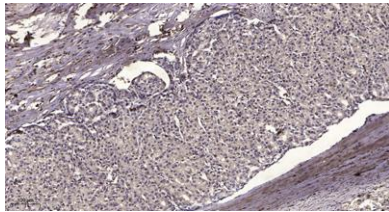
## Background

This gene encodes a cell surface tyrosine kinase receptor for members of the platelet-derived



growth factor family. These growth factors are mitogens for cells of mesenchymal origin. The identity of the growth factor bound to a receptor monomer determines whether the functional receptor is a homodimer or a heterodimer, composed of both platelet-derived growth factor receptor alpha and beta polypeptides. Studies suggest that this gene plays a role in organ development, wound healing, and tumor progression. Mutations in this gene have been associated with idiopathic hypereosinophilic syndrome, somatic and familial gastrointestinal stromal tumors, and a variety of other cancers. [provided by RefSeq, Mar 2012],

Immunohistochemical analysis of paraffin-embedded human liver cancer. 1, Antibody was diluted at 1:200(4° overnight). 2, Tris-EDTA,pH9.0 was used for antigen retrieval. 3,Secondary antibody was diluted at 1:200(room temperature, 45min).



Western Blot analysis of Hela treated or untreated by LPS lysis, using primary antibody at 1:1000 dilution. Secondary antibody(catalog#:RS23920) was diluted at 1:10000

