

AP2B rabbit pAb

Cat No.:ES18310

For research use only

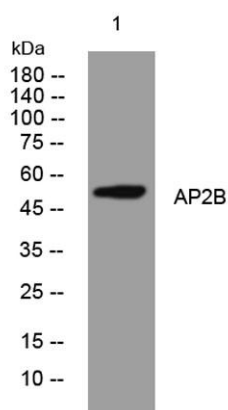
Overview

Product Name	AP2B rabbit pAb
Host species	Rabbit
Applications	WB
Species Cross-Reactivity	Human; Mouse
Recommended dilutions	WB 1: 500-2000
Immunogen	Synthesized peptide derived from human AP2B AA range: 18-68
Specificity	This antibody detects endogenous levels of AP2B at Human/Mouse
Formulation	Liquid in PBS containing 50% glycerol, 0.5% BSA and 0.02% sodium azide.
Storage	Store at -20°C. Avoid repeated freeze-thaw cycles.
Protein Name	AP2B
Gene Name	TFAP2B
Cellular localization	Nucleus . In the brain, localizes to the arcuate hypothalamic nucleus, the ventromedial hypothalamic nucleus and the accumbens nucleus of the ventral striatum. .
Purification	The antibody was affinity-purified from rabbit antiserum by affinity-chromatography using epitope-specific immunogen.
Clonality	Polyclonal
Concentration	1 mg/ml
Observed band	
Human Gene ID	7021
Human Swiss-Prot Number	Q92481
Alternative Names	
Background	This gene encodes a member of the AP-2 family of transcription factors. AP-2 proteins form homo- or hetero-dimers with other AP-2 family members and bind specific DNA sequences. They are thought to stimulate cell proliferation and suppress terminal differentiation of specific cell types during





embryonic development. Specific AP-2 family members differ in their expression patterns and binding affinity for different promoters. This protein functions as both a transcriptional activator and repressor. Mutations in this gene result in autosomal dominant Char syndrome, suggesting that this gene functions in the differentiation of neural crest cell derivatives. [provided by RefSeq, Jul 2008],



Western blot analysis of lysates from HeLa cells, primary antibody was diluted at 1:1000, 4° over night

