

ATG14L Rabbit rabbit pAb

Cat No.:ES20830

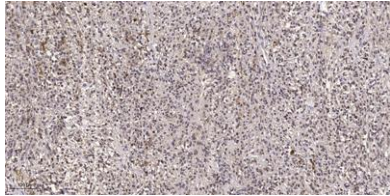
For research use only

Overview

Product Name	ATG14L Rabbit rabbit pAb
Host species	Rabbit
Applications	IHC;IF
Species Cross-Reactivity	Human;Mouse;Rat
Recommended dilutions	IHC-p 1:50-300
Immunogen	Recombinant Protein of ATG14L
Specificity	The antibody detects endogenous ATG14L protein
Formulation	Liquid in PBS containing 50% glycerol, 0.5% BSA and 0.02% sodium azide.
Storage	Store at -20°C. Avoid repeated freeze-thaw cycles.
Protein Name	Beclin 1-associated autophagy-related key regulator (Barkor) (Autophagy-related protein 14-like protein) (Atg14L)
Gene Name	ATG14 KIAA0831
Cellular localization	Cytoplasm . Endoplasmic reticulum membrane ; Peripheral membrane protein . Preautophagosomal structure membrane ; Peripheral membrane protein . Cytoplasmic vesicle, autophagosome membrane ; Peripheral membrane protein . Cytosolic under nutrient-rich condi
Purification	The antibody was affinity-purified from rabbit antiserum by affinity-chromatography using epitope-specific immunogen.
Clonality	Polyclonal
Concentration	1 mg/ml
Observed band	55kD
Human Gene ID	22863
Human Swiss-Prot Number	Q6ZNE5
Alternative Names	Beclin 1-associated autophagy-related key regulator (Barkor;Autophagy-related protein 14-like protein;Atg14L)
Background	miscellaneous:The sequence shown here is derived from an EMBL/GenBank/DDBJ third party



annotation (TPA) entry.,



Immunohistochemical analysis of paraffin-embedded human small intestinal carcinoma tissue. 1,primary Antibody was diluted at 1:200(4° overnight). 2, Sodium citrate pH 6.0 was used for antigen retrieval(>98°C,20min). 3,Secondary antibody was diluted at 1:2

