

# ESX1 rabbit pAb

Cat No.:ES16662

For research use only

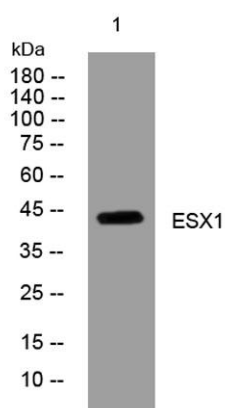
## Overview

Product Name	ESX1 rabbit pAb
Host species	Rabbit
Applications	WB
Species Cross-Reactivity	Human;Rat;Mouse;
Recommended dilutions	WB 1: 500-2000
Immunogen	Synthesized peptide derived from human ESX1 AA range: 327-377
Specificity	This antibody detects endogenous levels of ESX1 at Human
Formulation	Liquid in PBS containing 50% glycerol, 0.5% BSA and 0.02% sodium azide.
Storage	Store at -20°C. Avoid repeated freeze-thaw cycles.
Protein Name	ESX1
Gene Name	ESX1 ESX1L ESX1R
Cellular localization	Cytoplasm . Nucleus . ESXR1-N localizes specifically to the nucleus while ESXR1-C localizes specifically to the cytoplasm.
Purification	The antibody was affinity-purified from rabbit antiserum by affinity-chromatography using epitope-specific immunogen.
Clonality	Polyclonal
Concentration	1 mg/ml
Observed band	
Human Gene ID	80712
Human Swiss-Prot Number	Q8N693
Alternative Names	
Background	This gene encodes a dual-function 65 kDa protein that undergoes proteolytic cleavage to produce a 45 kDa N-terminal fragment with a paired-like homeodomain and a 20 kDa C-terminal fragment with a proline-rich domain. The C-terminal fragment localizes to the cytoplasm while the N-terminal fragment localizes exclusively to the nucleus. In





contrast to human, the mouse homolog has a novel PN/PF motif in the C-terminus and is paternally imprinted in placental tissue. This gene likely plays a role in placental development and spermatogenesis. [provided by RefSeq, Jan 2010],



Western blot analysis of lysates from U2OS cells, primary antibody was diluted at 1:1000, 4°over night

