

NALD2 rabbit pAb

Cat No.:ES14569

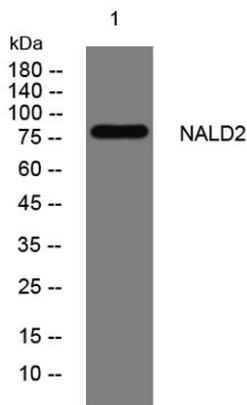
For research use only

Overview

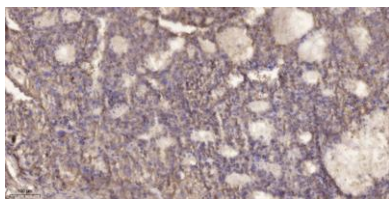
Product Name	NALD2 rabbit pAb
Host species	Rabbit
Applications	WB;IHC
Species Cross-Reactivity	Human; Mouse
Recommended dilutions	WB 1:500-2000;IHC-p 1:50-300
Immunogen	Synthesized peptide derived from human NALD2 AA range: 9-59
Specificity	This antibody detects endogenous levels of NALD2 at Human/Mouse
Formulation	Liquid in PBS containing 50% glycerol, 0.5% BSA and 0.02% sodium azide.
Storage	Store at -20°C. Avoid repeated freeze-thaw cycles.
Protein Name	NALD2
Gene Name	NAALAD2
Cellular localization	Cell membrane ; Single-pass type II membrane protein .
Purification	The antibody was affinity-purified from rabbit antiserum by affinity-chromatography using epitope-specific immunogen.
Clonality	Polyclonal
Concentration	1 mg/ml
Observed band	
Human Gene ID	10003
Human Swiss-Prot Number	Q9Y3Q0
Alternative Names	
Background	This gene is a member of the N-acetylated alpha-linked acidic dipeptidase (NAALADase) gene family. The representative member of this family is the gene encoding human prostate-specific membrane antigen (PSM), which is a marker of prostatic carcinomas and is the first to be shown to possess NAALADase activity. NAALADase cleaves N-acetyl-L-aspartate-L-glutamate (NAAG), which is a



neuropeptide expressed both in the central nervous systems and in the periphery and is thought to function as a neurotransmitter. The product of this gene is a type II integral membrane protein. Transient transfection of this gene confers both NAALADase and dipetidyl peptidase IV activities to mammalian cells. This gene is highly expressed in ovary and testis as well as within discrete brain areas. Two transcript variants encoding different isoforms have been found for this gene. [provided by RefSeq, Jul 2014],



Western blot analysis of lysates from HeLa cells, primary antibody was diluted at 1:1000, 4° over night



Immunohistochemical analysis of paraffin-embedded human liver cancer. 1, Antibody was diluted at 1:200(4° overnight). 2, Tris-EDTA, pH9.0 was used for antigen retrieval. 3, Secondary antibody was diluted at 1:200(room temperature, 45min).

