

# STBD1 rabbit pAb

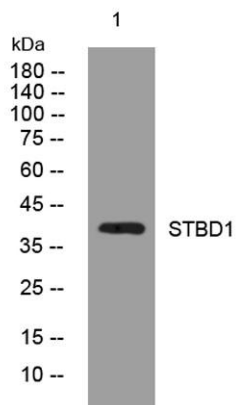
Cat No.:ES12906

For research use only

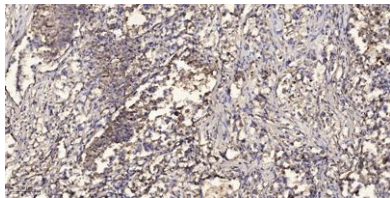
## Overview

Product Name	STBD1 rabbit pAb
Host species	Rabbit
Applications	WB;ELISA;IHC
Species Cross-Reactivity	Human; Mouse;Rat
Recommended dilutions	WB 1:500-2000;IHC-p 1:50-300; ELISA 2000-20000
Immunogen	Synthesized peptide derived from human STBD1 AA range: 107-157
Specificity	This antibody detects endogenous levels of STBD1 at Human/Mouse/Rat
Formulation	Liquid in PBS containing 50% glycerol, 0.5% BSA and 0.02% sodium azide.
Storage	Store at -20°C. Avoid repeated freeze-thaw cycles.
Protein Name	STBD1
Gene Name	STBD1 GENX-3414
Cellular localization	Preautophagosomal structure membrane ; Single-pass type III membrane protein . Endoplasmic reticulum membrane ; Single-pass type III membrane protein . Cell membrane, sarcolemma, T-tubule . Also detected near the junctional sarcoplasmic reticulum (PubMed:
Purification	The antibody was affinity-purified from rabbit antiserum by affinity-chromatography using epitope-specific immunogen.
Clonality	Polyclonal
Concentration	1 mg/ml
Observed band	
Human Gene ID	8987
Human Swiss-Prot Number	O95210
Alternative Names	
Background	





Western blot analysis of lysates from MCF-7 cells, primary antibody was diluted at 1:1000, 4° over night



Immunohistochemical analysis of paraffin-embedded human Squamous cell carcinoma of lung. 1, Antibody was diluted at 1:200(4° overnight). 2, Tris-EDTA,pH9.0 was used for antigen retrieval. 3,Secondary antibody was diluted at 1:200(room temperature, 45min).

