

Desmin Rabbit pAb

Cat No.:ES20865

For research use only

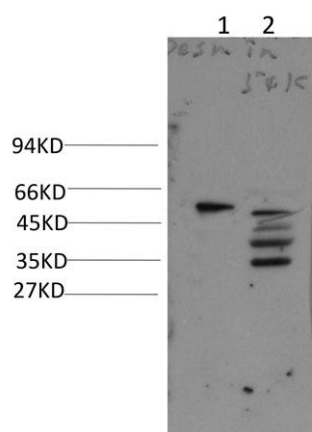
Overview

Product Name	Desmin Rabbit pAb
Host species	Rabbit
Applications	IHC;WB
Species Cross-Reactivity	Human; Mouse;Rat
Recommended dilutions	IHC-p1:50-200 ,WB 1:1000-2000
Immunogen	Synthesized peptide derived from human Desmin AA range: 197-247
Specificity	This antibody detects endogenous levels of Desmin at Human, Mouse,Rat
Formulation	Liquid in PBS containing 50% glycerol, 0.5% BSA and 0.02% sodium azide.
Storage	Store at -20°C. Avoid repeated freeze-thaw cycles.
Protein Name	Desmin
Gene Name	DES
Cellular localization	Cytoplasmic
Purification	The antibody was affinity-purified from rabbit antiserum by affinity-chromatography using epitope-specific immunogen.
Clonality	Polyclonal
Concentration	1 mg/ml
Observed band	54kD
Human Gene ID	1674
Human Swiss-Prot Number	P17661
Alternative Names	Desmin
Background	This gene encodes a muscle-specific class III intermediate filament. Homopolymers of this protein form a stable intracytoplasmic filamentous network connecting myofibrils to each other and to the plasma membrane. Mutations in this gene are associated with desmin-related myopathy, a familial cardiac and skeletal myopathy (CSM), and with distal myopathies. [provided by RefSeq, Jul 2008],

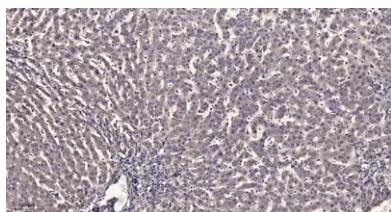




ELK Biotechnology



Western blot analysis of 1) Mouse Heart Tissue, 2) Rat Heart Tissue Lysate using Desmin Rabbit Polyclonal Antibody diluted at 1:2,000.



Immunohistochemical analysis of paraffin-embedded human liver cancer. 1, Antibody was diluted at 1:200 (4° overnight). 2, Tris-EDTA, pH 9.0 was used for antigen retrieval. 3, Secondary antibody was diluted at 1:200 (room temperature, 45min).



+86-27-59760950

ELKbio@ELKbiotech.com

www.elkbiotech.com

23-2, No.388 Gaoxin 2nd Road, Wuhan East Lake Hi-tech Development Zone, Hubei, P.R.C.