



# MYH-pan (Acetyl Lys1394) rabbit pAb

Cat No.:ES20118

For research use only

## Overview

<b>Product Name</b>	MYH-pan (Acetyl Lys1394) rabbit pAb
<b>Host species</b>	Rabbit
<b>Applications</b>	WB;IHC
<b>Species</b>	Human;Mouse;Rat
<b>Cross-Reactivity</b>	
<b>Recommended dilutions</b>	WB 1:500-2000;IHC-p 1:50-300
<b>Immunogen</b>	Synthesized peptide derived from human MYH-pan (Acetyl Lys1394)
<b>Specificity</b>	This antibody detects endogenous levels of Human,Mouse,Rat MYH-pan (Acetyl Lys1394)
<b>Formulation</b>	Liquid in PBS containing 50% glycerol, 0.5% BSA and 0.02% sodium azide.
<b>Storage</b>	Store at -20°C. Avoid repeated freeze-thaw cycles.
<b>Protein Name</b>	MYH-pan (Acetyl Lys1394)
<b>Gene Name</b>	MYH1
<b>Cellular localization</b>	Cytoplasm, myofibril. Thick filaments of the myofibrils.
<b>Purification</b>	The antibody was affinity-purified from rabbit antiserum by affinity-chromatography using epitope-specific immunogen.
<b>Clonality</b>	Polyclonal
<b>Concentration</b>	1 mg/ml
<b>Observed band</b>	77kD
<b>Human Gene ID</b>	4619
<b>Human Swiss-Prot Number</b>	P12882/Q9UKX2/P11055/Q9Y623/P13533/P12883/P13535
<b>Alternative Names</b>	Myosin-1 (Myosin heavy chain 1;Myosin heavy chain 2x;MyHC-2x;Myosin heavy chain IIx/d;MyHC-IIx/d;Myosin heavy chain, skeletal muscle, adult 1)
<b>Background</b>	Myosin is a major contractile protein which converts chemical energy into mechanical energy through the hydrolysis of ATP. Myosin is a hexameric protein composed of a pair of myosin heavy chains (MYH) and two pairs of

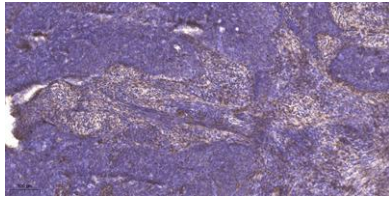




**ELK Biotechnology**

nonidentical light chains. Myosin heavy chains are encoded by a multigene family. In mammals at least 10 different myosin heavy chain (MYH) isoforms have been described from striated, smooth, and nonmuscle cells. These isoforms show expression that is spatially and temporally regulated during development. [provided by RefSeq, Jul 2008],

Immunohistochemical analysis of paraffin-embedded human cervical carcinoma. 1, Antibody was diluted at 1:200(4° overnight). 2, Tris-EDTA,pH9.0 was used for antigen retrieval. 3,Secondary antibody was diluted at 1:200(room temperature, 45min).



+86-27-59760950

[ELKbio@ELKbiotech.com](mailto:ELKbio@ELKbiotech.com)

[www.elkbiotech.com](http://www.elkbiotech.com)

23-2, No.388 Gaoxin 2nd Road,Wuhan East Lake Hi-tech Development Zone, Hubei , P.R.C