

# IFT46 rabbit pAb

Cat No.:ES15524

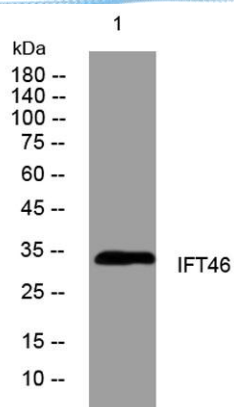
For research use only

## Overview

Product Name	IFT46 rabbit pAb
Host species	Rabbit
Applications	WB
Species Cross-Reactivity	Human; Mouse;Rat
Recommended dilutions	WB 1: 500-2000
Immunogen	Synthesized peptide derived from human IFT46 AA range: 243-293
Specificity	This antibody detects endogenous levels of IFT46 at Human/Mouse/Rat
Formulation	Liquid in PBS containing 50% glycerol, 0.5% BSA and 0.02% sodium azide.
Storage	Store at -20°C. Avoid repeated freeze-thaw cycles.
Protein Name	IFT46
Gene Name	IFT46 C11orf2 C11orf60
Cellular localization	Cytoplasm, cytoskeleton, cilium basal body . Cell projection, cilium . Expression is concentrated at the cilium basal body but is also detected along the length of the cilium. .
Purification	The antibody was affinity-purified from rabbit antiserum by affinity-chromatography using epitope-specific immunogen.
Clonality	Polyclonal
Concentration	1 mg/ml
Observed band	
Human Gene ID	56912
Human Swiss-Prot Number	Q9NQC8
Alternative Names	
Background	



**ELK Biotechnology**



Western blot analysis of lysates from KB cells, primary antibody was diluted at 1:1000, 4° over night