



NUD11 rabbit pAb

Cat No.:ES14435

For research use only

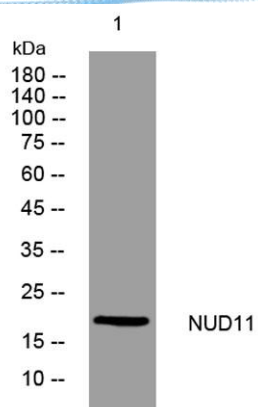
Overview

Product Name	NUD11 rabbit pAb
Host species	Rabbit
Applications	WB
Species Cross-Reactivity	Human; Mouse
Recommended dilutions	WB 1: 500-2000
Immunogen	Synthesized peptide derived from human NUD11 AA range: 83-133
Specificity	This antibody detects endogenous levels of NUD11 at Human/Mouse
Formulation	Liquid in PBS containing 50% glycerol, 0.5% BSA and 0.02% sodium azide.
Storage	Store at -20°C. Avoid repeated freeze-thaw cycles.
Protein Name	NUD11
Gene Name	NUDT11 APS1 DIPP3B
Cellular localization	Cytoplasm .
Purification	The antibody was affinity-purified from rabbit antiserum by affinity-chromatography using epitope-specific immunogen.
Clonality	Polyclonal
Concentration	1 mg/ml
Observed band	
Human Gene ID	55190
Human Swiss-Prot Number	Q96G61
Alternative Names	
Background	NUDT11 belongs to a subgroup of phosphohydrolases that preferentially attack diphosphoinositol polyphosphates (Hidaka et al., 2002 [PubMed 12105228]).[supplied by OMIM, Mar 2008],





ELK Biotechnology



Western blot analysis of lysates from MCF-7 cells, primary antibody was diluted at 1:1000, 4° over night



+86-27-59760950

ELKbio@ELKbiotech.com

www.elkbiotech.com

23-2, No.388 Gaoxin 2nd Road, Wuhan East Lake Hi-tech Development Zone, Hubei, P.R.C.