

# LCAT rabbit pAb

Cat No.:ES15186

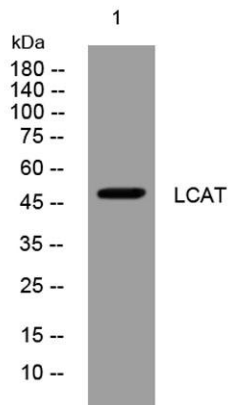
For research use only

## Overview

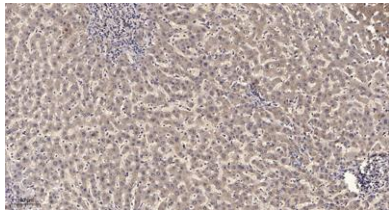
Product Name	LCAT rabbit pAb
Host species	Rabbit
Applications	WB;ELISA;IHC
Species Cross-Reactivity	Human; Mouse;Rat
Recommended dilutions	WB 1:500-2000;IHC-p 1:50-300; ELISA 2000-20000
Immunogen	Synthesized peptide derived from human LCAT AA range: 6-56
Specificity	This antibody detects endogenous levels of LCAT at Human/Mouse/Rat
Formulation	Liquid in PBS containing 50% glycerol, 0.5% BSA and 0.02% sodium azide.
Storage	Store at -20°C. Avoid repeated freeze-thaw cycles.
Protein Name	LCAT
Gene Name	LCAT
Cellular localization	Secreted . Secreted into blood plasma (PubMed:3458198, PubMed:8820107, PubMed:10222237). Produced in astrocytes and secreted into cerebral spinal fluid (CSF) (PubMed:10222237). .
Purification	The antibody was affinity-purified from rabbit antiserum by affinity-chromatography using epitope-specific immunogen.
Clonality	Polyclonal
Concentration	1 mg/ml
Observed band	
Human Gene ID	3931
Human Swiss-Prot Number	P04180
Alternative Names	
Background	This gene encodes the extracellular cholesterol esterifying enzyme, lecithin-cholesterol acyltransferase. The esterification of cholesterol is required for cholesterol transport. Mutations in this gene have been found to cause fish-eye disease as



well as LCAT deficiency. [provided by RefSeq, Jul 2008],



Western blot analysis of lysates from MCF-7 cells, primary antibody was diluted at 1:1000, 4° over night



Immunohistochemical analysis of paraffin-embedded human liver cancer. 1, Antibody was diluted at 1:200(4° overnight). 2, Tris-EDTA, pH 9.0 was used for antigen retrieval. 3, Secondary antibody was diluted at 1:200(room temperature, 45min).

