

# VPS16 rabbit pAb

Cat No.:ES12349

For research use only

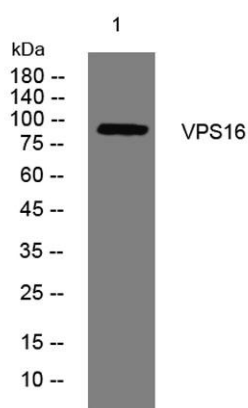
## Overview

Product Name	VPS16 rabbit pAb
Host species	Rabbit
Applications	WB
Species Cross-Reactivity	Human; Mouse
Recommended dilutions	WB 1: 500-2000
Immunogen	Synthesized peptide derived from human VPS16 AA range: 568-618
Specificity	This antibody detects endogenous levels of VPS16 at Human/Mouse
Formulation	Liquid in PBS containing 50% glycerol, 0.5% BSA and 0.02% sodium azide.
Storage	Store at -20°C. Avoid repeated freeze-thaw cycles.
Protein Name	VPS16
Gene Name	VPS16
Cellular localization	Late endosome membrane ; Peripheral membrane protein ; Cytoplasmic side . Lysosome membrane ; Peripheral membrane protein ; Cytoplasmic side . Early endosome . Cytoplasmic vesicle, clathrin-coated vesicle . Cytoplasmic vesicle, autophagosome . Colocalizes
Purification	The antibody was affinity-purified from rabbit antiserum by affinity-chromatography using epitope-specific immunogen.
Clonality	Polyclonal
Concentration	1 mg/ml
Observed band	
Human Gene ID	64601
Human Swiss-Prot Number	Q9H269
Alternative Names	
Background	Vesicle mediated protein sorting plays an important role in segregation of intracellular molecules into distinct organelles. Genetic studies in yeast have identified more than 40 vacuolar protein sorting





(VPS) genes involved in vesicle transport to vacuoles. This gene encodes the human homolog of yeast class C Vps16 protein. The mammalian class C Vps proteins are predominantly associated with late endosomes/lysosomes, and like their yeast counterparts, may mediate vesicle trafficking steps in the endosome/lysosome pathway. Two transcript variants encoding different isoforms have been found for this gene. [provided by RefSeq, Jul 2009],



Western blot analysis of lysates from DU145 cells, primary antibody was diluted at 1:1000, 4° over night

