

REPI1 rabbit pAb

Cat No.:ES13426

For research use only

Overview

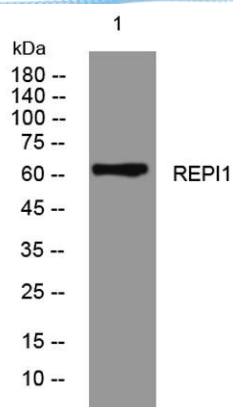
Product Name	REPI1 rabbit pAb
Host species	Rabbit
Applications	WB
Species Cross-Reactivity	Human; Mouse;Rat
Recommended dilutions	WB 1:500-2000
Immunogen	Synthesized peptide derived from human REPI1 AA range: 10-60
Specificity	This antibody detects endogenous levels of REPI1 at Human/Mouse/Rat
Formulation	Liquid in PBS containing 50% glycerol, 0.5% BSA and 0.02% sodium azide.
Storage	Store at -20°C. Avoid repeated freeze-thaw cycles.
Protein Name	REPI1
Gene Name	REPIN1 RIP60 ZNF464
Cellular localization	Nucleus .
Purification	The antibody was affinity-purified from rabbit antiserum by affinity-chromatography using epitope-specific immunogen.
Clonality	Polyclonal
Concentration	1 mg/ml
Observed band	60kD
Human Gene ID	29803
Human Swiss-Prot Number	Q9BWE0
Alternative Names	Replication initiator 1 (60 kDa origin-specific DNA-binding protein) (60 kDa replication initiation region protein) (ATT-binding protein) (DHFR oribeta-binding protein RIP60) (Zinc finger protein 464)

Background





ELK Biotechnology



Western blot analysis of lysates from KB cells, primary antibody was diluted at 1:1000, 4° over night



+86-27-59760950

ELKbio@ELKbiotech.com

www.elkbiotech.com

23-2, No.388 Gaoxin 2nd Road, Wuhan East Lake Hi-tech Development Zone, Hubei, P.R.C.