

# NDUFA1 Polyclona Antibody

Cat No.:ES14533

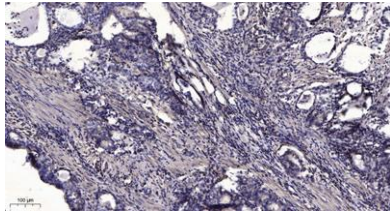
For research use only

## Overview

Product Name	NDUFA1 Polyclona Antibody
Host species	Rabbit
Applications	IHC; ELISA
Species Cross-Reactivity	Human; Mouse; Rat
Recommended dilutions	IHC-p 1:50-200, ELISA(peptide)1:5000-20000
Immunogen	Synthesized peptide derived from human NDUFA1 AA range: 20-100
Specificity	This antibody detects endogenous levels of human NDUFA1
Formulation	Liquid in PBS containing 50% glycerol, 0.5% BSA and 0.02% sodium azide.
Storage	Store at -20°C. Avoid repeated freeze-thaw cycles.
Protein Name	NDUFA1
Gene Name	NDUFA1
Cellular localization	Mitochondrion inner membrane ; Single-pass membrane protein ; Matrix side .
Purification	The antibody was affinity-purified from rabbit antiserum by affinity-chromatography using epitope-specific immunogen.
Clonality	Polyclonal
Concentration	1 mg/ml
Observed band	
Human Gene ID	4694
Human Swiss-Prot Number	O15239
Alternative Names	NADH dehydrogenase [ubiquinone] 1 alpha subcomplex subunit 1 (Complex I-MWFE;CI-MWFE;NADH-ubiquinone oxidoreductase MWFE subunit)
Background	The human NDUFA1 gene codes for an essential component of complex I of the respiratory chain, which transfers electrons from NADH to ubiquinone. It has been noted that the N-terminal hydrophobic domain has the potential to be folded into an



alpha-helix spanning the inner mitochondrial membrane with a C-terminal hydrophilic domain interacting with globular subunits of complex I. The highly conserved two-domain structure suggests that this feature is critical for the protein function and might act as an anchor for the NADH:ubiquinone oxidoreductase complex at the inner mitochondrial membrane. However, the NDUF1 peptide is one of about 31 components of the "hydrophobic protein" (HP) fraction of complex I which is involved in proton translocation. Thus the NDUF1 peptide may also participate in that function. [provided by RefSeq, Jul 2008],



Immunohistochemical analysis of paraffin-embedded human Gastric adenocarcinoma. 1, Antibody was diluted at 1:200(4° overnight). 2, Tris-EDTA,pH9.0 was used for antigen retrieval. 3,Secondary antibody was diluted at 1:200(room temperature, 45min).

