

TORC1/CRTC1 (phospho-Ser151) rabbit pAb

Cat No.:ES12606

For research use only

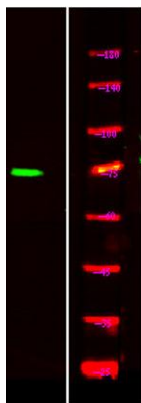
Overview

Product Name	TORC1/CRTC1 (phospho-Ser151) rabbit pAb
Host species	Rabbit
Applications	WB
Species Cross-Reactivity	Human;Rat;Mouse;
Recommended dilutions	WB 1:1000-2000
Immunogen	Synthesized phospho peptide around human TORC1 and CRTC1 (Ser151)
Specificity	This antibody detects endogenous levels of Human TORC1 or CRTC1 (phospho-Ser151)
Formulation	Liquid in PBS containing 50% glycerol, 0.5% BSA and 0.02% sodium azide.
Storage	Store at -20°C. Avoid repeated freeze-thaw cycles.
Protein Name	TORC1/CRTC1 (Ser151)
Gene Name	CRTC1 KIAA0616 MECT1 TORC1 WAMTP1
Cellular localization	Cytoplasm . Nucleus . Cytoplasmic when phosphorylated by SIK or AMPK and when sequestered by 14-3-3 proteins (PubMed:16817901). Translocated to the nucleus on Ser-151 dephosphorylation, instigated by a number of factors including calcium ion and cAMP level
Purification	The antibody was affinity-purified from rabbit antiserum by affinity-chromatography using epitope-specific immunogen.
Clonality	Polyclonal
Concentration	1 mg/ml
Observed band	70kD
Human Gene ID	23373
Human Swiss-Prot Number	Q6UUV9
Alternative Names	CREB-regulated transcription coactivator 1 (Mucoepidermoid carcinoma translocated protein 1) (Transducer of regulated cAMP response element-binding protein 1) (TORC-1) (Transducer of CREB protein 1)





Background



Western Blot analysis of Hela treated or untreated by LPS lysis, using primary antibody at 1:1000 dilution. Secondary antibody(catalog#:RS23920) was diluted at 1:10000

