

PGM1 rabbit pAb

Cat No.:ES14150

For research use only

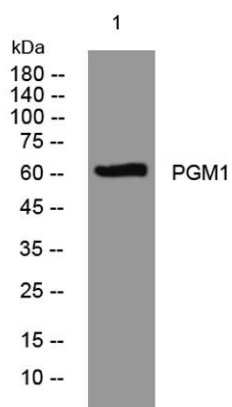
Overview

Product Name	PGM1 rabbit pAb
Host species	Rabbit
Applications	WB
Species Cross-Reactivity	Human; Mouse;Rat
Recommended dilutions	WB 1:500-2000
Immunogen	Synthesized peptide derived from human PGM1 AA range: 318-368
Specificity	This antibody detects endogenous levels of PGM1 at Human/Mouse/Rat
Formulation	Liquid in PBS containing 50% glycerol, 0.5% BSA and 0.02% sodium azide.
Storage	Store at -20°C. Avoid repeated freeze-thaw cycles.
Protein Name	PGM1
Gene Name	PGM1
Cellular localization	[Isoform 1]: Cytoplasm.
Purification	The antibody was affinity-purified from rabbit antiserum by affinity-chromatography using epitope-specific immunogen.
Clonality	Polyclonal
Concentration	1 mg/ml
Observed band	60kD
Human Gene ID	5236
Human Swiss-Prot Number	P36871
Alternative Names	Phosphoglucomutase-1 (PGM 1) (EC 5.4.2.2) (Glucose phosphomutase 1)
Background	The protein encoded by this gene is an isozyme of phosphoglucomutase (PGM) and belongs to the phosphohexose mutase family. There are several PGM isozymes, which are encoded by different genes and catalyze the transfer of phosphate between the 1 and 6 positions of glucose. In most cell types, this PGM isozyme is predominant, representing about 90% of total PGM activity. In red





cells, PGM2 is a major isozyme. This gene is highly polymorphic. Mutations in this gene cause glycogen storage disease type 14. Alternatively spliced transcript variants encoding different isoforms have been identified in this gene.[provided by RefSeq, Mar 2010],



Western blot analysis of lysates from HeLa cells, primary antibody was diluted at 1:1000, 4° over night

