

SO5A1 rabbit pAb

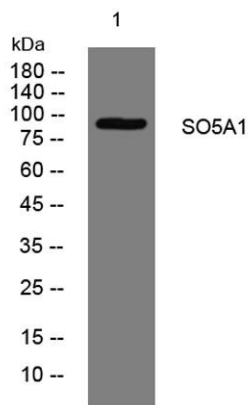
Cat No.:ES13026

For research use only

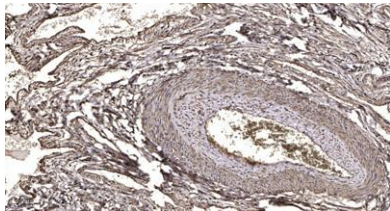
Overview

Product Name	SO5A1 rabbit pAb
Host species	Rabbit
Applications	WB;IHC
Species Cross-Reactivity	Human;Rat;Mouse;
Recommended dilutions	WB 1:500-2000;IHC-p 1:50-300
Immunogen	Synthesized peptide derived from human SO5A1 AA range: 292-342
Specificity	This antibody detects endogenous levels of SO5A1 at Human
Formulation	Liquid in PBS containing 50% glycerol, 0.5% BSA and 0.02% sodium azide.
Storage	Store at -20°C. Avoid repeated freeze-thaw cycles.
Protein Name	SO5A1
Gene Name	SLCO5A1 OATP5A1 SLC21A15
Cellular localization	Cell membrane; Multi-pass membrane protein.
Purification	The antibody was affinity-purified from rabbit antiserum by affinity-chromatography using epitope-specific immunogen.
Clonality	Polyclonal
Concentration	1 mg/ml
Observed band	
Human Gene ID	81796
Human Swiss-Prot Number	Q9H2Y9
Alternative Names	
Background	This gene encodes a 12 transmembrane domain protein that is a member of the solute carrier organic anion transporter superfamily. Alternative splicing results in multiple transcript variants. [provided by RefSeq, Mar 2009],





Western blot analysis of lysates from HEK293 cells,
primary antibody was diluted at 1:1000, 4° over night



Immunohistochemical analysis of paraffin-embedded
human oophoroma. 1, Antibody was diluted at 1:200(4°
overnight). 2, Tris-EDTA, pH9.0 was used for antigen
retrieval. 3, Secondary antibody was diluted at 1:200(room
temperature, 45min).

