

SOD1 rabbit pAb

Cat No.:ES20629

For research use only

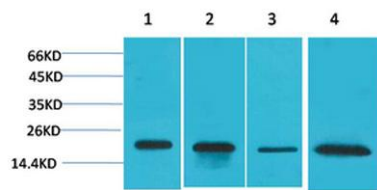
Overview

Product Name	SOD1 rabbit pAb
Host species	Rabbit
Applications	WB;IHC;IF
Species Cross-Reactivity	Human;Mouse;Rat
Recommended dilutions	Western Blot: 1/500 - 1/2000.IHC-p:1:50-300. Not yet tested in other applications.
Immunogen	Synthesized peptide derived from the Internal region of human SOD-1.
Specificity	The antibody detects endogenous SOD1 protein.
Formulation	Liquid in PBS containing 50% glycerol, 0.5% BSA and 0.02% sodium azide.
Storage	Store at -20°C. Avoid repeated freeze-thaw cycles.
Protein Name	Superoxide dismutase [Cu-Zn]
Gene Name	SOD1
Cellular localization	Cytoplasm . Mitochondrion . Nucleus . Predominantly cytoplasmic; the pathogenic variants ALS1 Arg-86 and Ala-94 gradually aggregates and accumulates in mitochondria. .
Purification	The antibody was affinity-purified from rabbit antiserum by affinity-chromatography using epitope-specific immunogen.
Clonality	Polyclonal
Concentration	
Observed band	18kD
Human Gene ID	6647
Human Swiss-Prot Number	P00441
Alternative Names	SOD1; Superoxide dismutase [Cu-Zn]; Superoxide dismutase 1; hSod1
Background	The protein encoded by this gene binds copper and zinc ions and is one of two isozymes responsible for destroying free superoxide radicals in the body. The encoded isozyme is a soluble cytoplasmic protein, acting as a homodimer to convert naturally-occurring



but harmful superoxide radicals to molecular oxygen and hydrogen peroxide. The other isozyme is a mitochondrial protein. Mutations in this gene have been implicated as causes of familial amyotrophic lateral sclerosis. Rare transcript variants have been reported for this gene. [provided by RefSeq, Jul 2008],

Western blot analysis of 1) HeLa, 2) MCF7, 3) Mouse Brain Tissue, 4) Rat Brain Tissue using SOD1 Polyclonal Antibody. Secondary antibody(catalog#:RS0002) was diluted at 1:20000



Immunohistochemical analysis of paraffin-embedded Mouse Kidney Tissue using SOD1 Polyclonal Antibody.

