

RSMB rabbit pAb

Cat No.:ES13325

For research use only

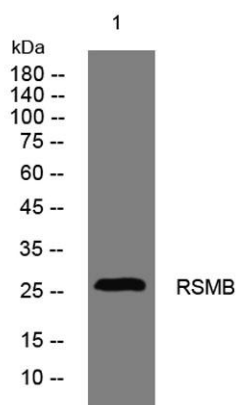
Overview

Product Name	RSMB rabbit pAb
Host species	Rabbit
Applications	WB
Species Cross-Reactivity	Human; Mouse;Rat
Recommended dilutions	WB 1: 500-2000
Immunogen	Synthesized peptide derived from human RSMB AA range: 42-92
Specificity	This antibody detects endogenous levels of RSMB at Human/Mouse/Rat
Formulation	Liquid in PBS containing 50% glycerol, 0.5% BSA and 0.02% sodium azide.
Storage	Store at -20°C. Avoid repeated freeze-thaw cycles.
Protein Name	RSMB
Gene Name	SNRPB COD SNRPB1
Cellular localization	Cytoplasm, cytosol . Nucleus . SMN-mediated assembly into core snRNPs occurs in the cytosol before SMN-mediated transport to the nucleus to be included in spliceosomes. .
Purification	The antibody was affinity-purified from rabbit antiserum by affinity-chromatography using epitope-specific immunogen.
Clonality	Polyclonal
Concentration	1 mg/ml
Observed band	
Human Gene ID	6628
Human Swiss-Prot Number	P14678
Alternative Names	
Background	The protein encoded by this gene is one of several nuclear proteins that are found in common among U1, U2, U4/U6, and U5 small ribonucleoprotein particles (snRNPs). These snRNPs are involved in pre-mRNA splicing, and the encoded protein may also play a role in pre-mRNA splicing or snRNP





structure. Autoantibodies from patients with systemic lupus erythematosus frequently recognize epitopes on the encoded protein. Two transcript variants encoding different isoforms (B and B') have been found for this gene. [provided by RefSeq, Jul 2008],



Western blot analysis of lysates from HeLa cells, primary antibody was diluted at 1:1000, 4° over night

