

# TMX2 rabbit pAb

Cat No.:ES12625

For research use only

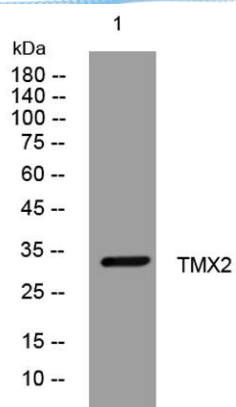
## Overview

|                          |   |
|--------------------------|---|
| Product Name             | TMX2 rabbit pAb   |
| Host species             | Rabbit  |
| Applications             | WB  |
| Species Cross-Reactivity | Human; Mouse;Rat  |
| Recommended dilutions    | WB 1: 500-2000  |
| Immunogen                | Synthesized peptide derived from human TMX2 AA range: 41-91   |
| Specificity              | This antibody detects endogenous levels of TMX2 at Human/Mouse/Rat  |
| Formulation              | Liquid in PBS containing 50% glycerol, 0.5% BSA and 0.02% sodium azide.   |
| Storage                  | Store at -20°C. Avoid repeated freeze-thaw cycles.  |
| Protein Name             | TMX2  |
| Gene Name                | TMX2 TXNDC14 CGI-31 My009 PIG26 PSEC0045 UNQ237/PRO270  |
| Cellular localization    | Endoplasmic reticulum membrane ; Single-pass type I membrane protein . Mitochondrion membrane . Localizes to endoplasmic reticulum mitochondria-associated membrane (MAMs) that connect the endoplasmic reticulum and the mitochondria. . |
| Purification             | The antibody was affinity-purified from rabbit antiserum by affinity-chromatography using epitope-specific immunogen.   |
| Clonality                | Polyclonal  |
| Concentration            | 1 mg/ml   |
| Observed band            |   |
| Human Gene ID            | 51075   |
| Human Swiss-Prot Number  | Q9Y320  |
| Alternative Names        |   |
| Background               |   |





**ELK Biotechnology**



Western blot analysis of lysates from SW480 cells, primary antibody was diluted at 1:1000, 4° over night



+86-27-59760950

ELKbio@ELKbiotech.com

[www.elkbiotech.com](http://www.elkbiotech.com)

23-2, No.388 Gaoxin 2nd Road, Wuhan East Lake Hi-tech Development Zone, Hubei, P.R.C.