

# SPG16 rabbit pAb

Cat No.:ES12992

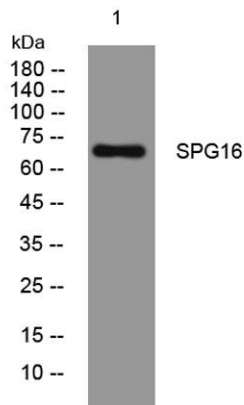
For research use only

## Overview

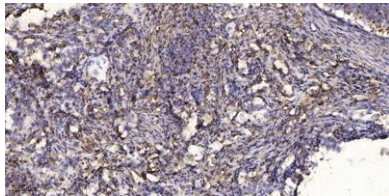
Product Name	SPG16 rabbit pAb
Host species	Rabbit
Applications	WB;ELISA;IHC
Species Cross-Reactivity	Human; Mouse
Recommended dilutions	WB 1:500-2000;IHC-p 1:50-300; ELISA 2000-20000
Immunogen	Synthesized peptide derived from human SPG16 AA range: 520-570
Specificity	This antibody detects endogenous levels of SPG16 at Human/Mouse
Formulation	Liquid in PBS containing 50% glycerol, 0.5% BSA and 0.02% sodium azide.
Storage	Store at -20°C. Avoid repeated freeze-thaw cycles.
Protein Name	SPG16
Gene Name	SPAG16 PF20
Cellular localization	Cytoplasm . Cytoplasm, cytoskeleton, flagellum axoneme . Cytoplasm, cytoskeleton, cilium axoneme . Cell projection, cilium, flagellum . Detected on the sperm flagellum axoneme. Detected in the central apparatus of the axoneme. Colocalizes with SPAG6 on mi
Purification	The antibody was affinity-purified from rabbit antiserum by affinity-chromatography using epitope-specific immunogen.
Clonality	Polyclonal
Concentration	1 mg/ml
Observed band	
Human Gene ID	79582
Human Swiss-Prot Number	Q8N0X2
Alternative Names	
Background	Cilia and flagella are comprised of a microtubular backbone, the axoneme, which is organized by the basal body and surrounded by plasma membrane. SPAG16 encodes 2 major proteins that associate



with the axoneme of sperm tail and the nucleus of postmeiotic germ cells, respectively (Zhang et al., 2007 [PubMed 17699735]).[supplied by OMIM, Jul 2008],



Western blot analysis of lysates from U2OS cells, primary antibody was diluted at 1:1000, 4° over night



Immunohistochemical analysis of paraffin-embedded human Squamous cell carcinoma of lung. 1, Antibody was diluted at 1:200(4° overnight). 2, Tris-EDTA,pH9.0 was used for antigen retrieval. 3,Secondary antibody was diluted at 1:200(room temperature, 45min).

