

# PEPC (Phospho Ser15) rabbit pAb

Cat No.:ES20563

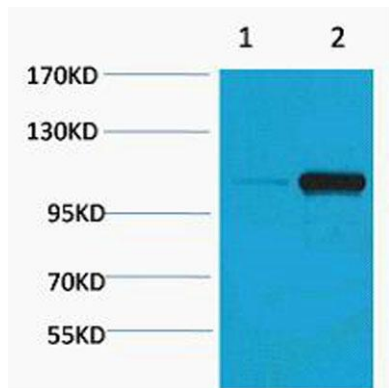
For research use only

## Overview

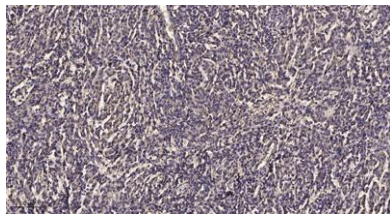
Product Name	PEPC (Phospho Ser15) rabbit pAb
Host species	Rabbit
Applications	WB; ELISA;IHC
Species Cross-Reactivity	Plants
Recommended dilutions	WB 1:500-2000;IHC-p 1:50-300; ELISA 2000-20000
Immunogen	Synthetic Peptide of PEPC (Phospho Ser15)
Specificity	The antibody detects endogenous PEPC (Phospho Ser15) protein.
Formulation	Liquid in PBS containing 50% glycerol, 0.5% BSA and 0.02% sodium azide.
Storage	Store at -20°C. Avoid repeated freeze-thaw cycles.
Protein Name	Gastricsin
Gene Name	PGC
Cellular localization	Secreted.
Purification	The antibody was affinity-purified from rabbit antiserum by affinity-chromatography using epitope-specific immunogen.
Clonality	Polyclonal
Concentration	
Observed band	105-110kD
Human Gene ID	5225
Human Swiss-Prot Number	P20142
Alternative Names	PGC; Gastricsin; Pepsinogen C
Background	This gene encodes an aspartic proteinase that belongs to the peptidase family A1. The encoded protein is a digestive enzyme that is produced in the stomach and constitutes a major component of the gastric mucosa. This protein is also secreted into the serum. This protein is synthesized as an inactive zymogen that includes a highly basic prosegment. This enzyme is converted into its active mature form at low pH by sequential cleavage of the prosegment that is carried out by the enzyme itself.



Polymorphisms in this gene are associated with susceptibility to gastric cancers. Serum levels of this enzyme are used as a biomarker for certain gastric diseases including *Helicobacter pylori* related gastritis. Alternate splicing results in multiple transcript variants. A pseudogene of this gene is found on chromosome 1. [provided by RefSeq, Oct 2009],



Western blot analysis of Maize 1) Dark, 2) Light, diluted at 1:2000. Secondary antibody(catalog#:RS0002) was diluted at 1:20000



Immunohistochemical analysis of paraffin-embedded human meningioma. 1, Antibody was diluted at 1:200(4° overnight). 2, Tris-EDTA,pH9.0 was used for antigen retrieval. 3,Secondary antibody was diluted at 1:200(room temperature, 45min).

