

EP3A rabbit pAb

Cat No.:ES16741

For research use only

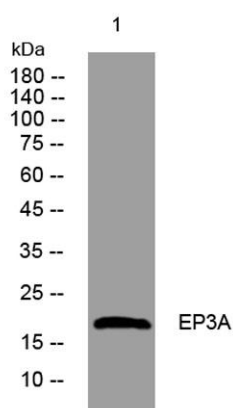
Overview

Product Name	EP3A rabbit pAb
Host species	Rabbit
Applications	WB
Species Cross-Reactivity	Human;Rat;Mouse;
Recommended dilutions	WB 1: 500-2000
Immunogen	Synthesized peptide derived from human EP3A AA range: 1-51
Specificity	This antibody detects endogenous levels of EP3A at Human
Formulation	Liquid in PBS containing 50% glycerol, 0.5% BSA and 0.02% sodium azide.
Storage	Store at -20°C. Avoid repeated freeze-thaw cycles.
Protein Name	EP3A
Gene Name	EDDM3A FAM12A HE3A
Cellular localization	Secreted .
Purification	The antibody was affinity-purified from rabbit antiserum by affinity-chromatography using epitope-specific immunogen.
Clonality	Polyclonal
Concentration	1 mg/ml
Observed band	
Human Gene ID	10876
Human Swiss-Prot Number	Q14507
Alternative Names	
Background	Testicular sperm are morphologically differentiated but are not progressively motile nor able to fertilize an egg. Post-testicular maturation requires exposure of spermatozoa to the microenvironment of the epididymal lumen. Spermatozoa undergo extensive changes in the epididymis, including enzymatic modifications, loss of pre-existing components and addition of new glycoproteins from epididymal secretions. These modifying proteins and enzymes





are synthesized by epithelial cells lining the epididymal duct and secreted apically into the lumen, where they come into contact with, and may be absorbed onto, the sperm membranes. The proteins encoded by the genes in this cluster are synthesized and secreted by epididymal epithelial cells. [provided by RefSeq, Jul 2008],



Western blot analysis of lysates from Jarkat cells, primary antibody was diluted at 1:1000, 4° over night

