



# PRSS8 (heavy chain, Cleaved-Ile45) rabbit pAb

Cat No.:ES20043

For research use only

## Overview

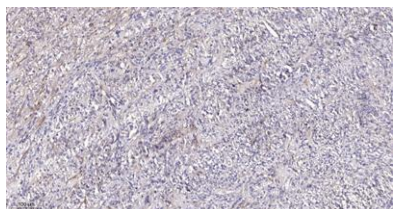
Product Name	PRSS8 (heavy chain, Cleaved-Ile45) rabbit pAb
Host species	Rabbit
Applications	WB;IHC
Species Cross-Reactivity	Human;Mouse;Rat
Recommended dilutions	WB 1:500-2000;IHC-p 1:50-300
Immunogen	Synthesized peptide derived from human PRSS8 (heavy chain, Cleaved-Ile45)
Specificity	This antibody detects endogenous levels of Human,Mouse,Rat PRSS8 (heavy chain, Cleaved-Ile45, protein was cleaved amino acid sequence between 44-45 )
Formulation	Liquid in PBS containing 50% glycerol, 0.5% BSA and 0.02% sodium azide.
Storage	Store at -20°C. Avoid repeated freeze-thaw cycles.
Protein Name	PRSS8 (heavy chain, Cleaved-Ile45)
Gene Name	PRSS8
Cellular localization	[Prostasin]: Cell membrane; Single-pass membrane protein.; [Prostasin light chain]: Secreted, extracellular space. Found in the seminal fluid. Secreted after cleavage of its C-terminus.; [Prostasin heavy chain]: Secreted, extracellular space. Found in the
Purification	The antibody was affinity-purified from rabbit antiserum by affinity-chromatography using epitope-specific immunogen.
Clonality	Polyclonal
Concentration	1 mg/ml
Observed band	32kD
Human Gene ID	5652
Human Swiss-Prot Number	Q16651
Alternative Names	Prostasin (EC 3.4.21.-;Channel-activating protease 1;CAP1;Serine protease 8) [Cleaved into: Prostasin





light chain; Prostate heavy chain]

### Background



Immunohistochemical analysis of paraffin-embedded human Colon cancer. 1, Antibody was diluted at 1:200(4° overnight). 2, Tris-EDTA,pH9.0 was used for antigen retrieval. 3,Secondary antibody was diluted at 1:200(room temperature, 45min).

