

# METRL rabbit pAb

Cat No.:ES14959

For research use only

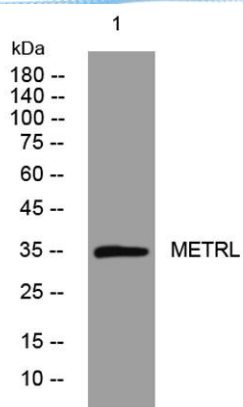
## Overview

Product Name	METRL rabbit pAb
Host species	Rabbit
Applications	WB;IHC
Species Cross-Reactivity	Human; Mouse;Rat
Recommended dilutions	WB 1:500-2000;IHC-p 1:50-300
Immunogen	Synthesized peptide derived from human METRL AA range: 78-128
Specificity	This antibody detects endogenous levels of METRL at Human/Mouse/Rat
Formulation	Liquid in PBS containing 50% glycerol, 0.5% BSA and 0.02% sodium azide.
Storage	Store at -20°C. Avoid repeated freeze-thaw cycles.
Protein Name	METRL
Gene Name	METRNL
Cellular localization	Secreted .
Purification	The antibody was affinity-purified from rabbit antiserum by affinity-chromatography using epitope-specific immunogen.
Clonality	Polyclonal
Concentration	1 mg/ml
Observed band	
Human Gene ID	284207
Human Swiss-Prot Number	Q641Q3
Alternative Names	
Background	

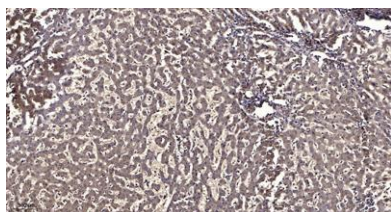




**ELK Biotechnology**



Western blot analysis of lysates from HpeG2 cells, primary antibody was diluted at 1:1000, 4° over night



Immunohistochemical analysis of paraffin-embedded human liver cancer. 1, Antibody was diluted at 1:200(4° overnight). 2, Tris-EDTA, pH9.0 was used for antigen retrieval. 3, Secondary antibody was diluted at 1:200(room temperature, 45min).



+86-27-59760950

ELKbio@ELKbiotech.com

[www.elkbiotech.com](http://www.elkbiotech.com)

23-2, No.388 Gaoxin 2nd Road, Wuhan East Lake Hi-tech Development Zone, Hubei, P.R.C.