

# SPTC2 rabbit pAb

Cat No.:ES12972

For research use only

## Overview

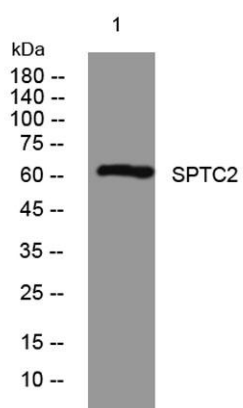
Product Name	SPTC2 rabbit pAb
Host species	Rabbit
Applications	WB
Species Cross-Reactivity	Human; Mouse
Recommended dilutions	WB 1:500-2000
Immunogen	Synthesized peptide derived from human SPTC2 AA range: 273-323
Specificity	This antibody detects endogenous levels of SPTC2 at Human/Mouse
Formulation	Liquid in PBS containing 50% glycerol, 0.5% BSA and 0.02% sodium azide.
Storage	Store at -20°C. Avoid repeated freeze-thaw cycles.
Protein Name	SPTC2
Gene Name	SPTLC2 KIAA0526 LCB2
Cellular localization	Endoplasmic reticulum membrane ; Single-pass membrane protein .
Purification	The antibody was affinity-purified from rabbit antiserum by affinity-chromatography using epitope-specific immunogen.
Clonality	Polyclonal
Concentration	1 mg/ml
Observed band	60kD
Human Gene ID	9517
Human Swiss-Prot Number	O15270
Alternative Names	Serine palmitoyltransferase 2 (EC 2.3.1.50) (Long chain base biosynthesis protein 2) (LCB 2) (Long chain base biosynthesis protein 2a) (LCB2a) (Serine-palmitoyl-CoA transferase 2) (SPT 2)
Background	This gene encodes a long chain base subunit of serine palmitoyltransferase. Serine palmitoyltransferase, which consists of two different subunits, is the key enzyme in sphingolipid biosynthesis. It catalyzes the





**ELK Biotechnology**

pyridoxal-5-prime-phosphate-dependent condensation of L-serine and palmitoyl-CoA to 3-oxosphinganine. Mutations in this gene were identified in patients with hereditary sensory neuropathy type I. [provided by RefSeq, Mar 2011],



Western blot analysis of lysates from SH-SY5Y cells,  
primary antibody was diluted at 1:1000, 4°over night



+86-27-59760950

[ELKbio@ELKbiotech.com](mailto:ELKbio@ELKbiotech.com)

[www.elkbiotech.com](http://www.elkbiotech.com)

23-2, No.388 Gaoxin 2nd Road,Wuhan East Lake Hi-tech Development Zone, Hubei , P.R.C