



# ROM1 rabbit pAb

Cat No.:ES13355

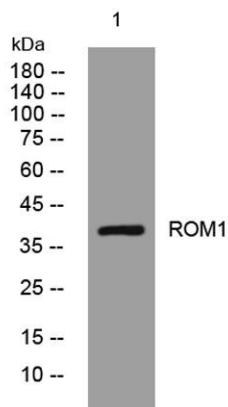
For research use only

## Overview

Product Name	ROM1 rabbit pAb
Host species	Rabbit
Applications	WB
Species Cross-Reactivity	Human; Mouse;Rat;C. parvum
Recommended dilutions	WB 1: 500-2000
Immunogen	Synthesized peptide derived from human ROM1 AA range: 163-213
Specificity	This antibody detects endogenous levels of ROM1 at Human/Mouse/Rat
Formulation	Liquid in PBS containing 50% glycerol, 0.5% BSA and 0.02% sodium azide.
Storage	Store at -20°C. Avoid repeated freeze-thaw cycles.
Protein Name	ROM1
Gene Name	ROM1 TSPAN23
Cellular localization	Photoreceptor inner segment membrane ; Multi-pass membrane protein . Photoreceptor outer segment membrane ; Multi-pass membrane protein .
Purification	The antibody was affinity-purified from rabbit antiserum by affinity-chromatography using epitope-specific immunogen.
Clonality	Polyclonal
Concentration	1 mg/ml
Observed band	
Human Gene ID	6094
Human Swiss-Prot Number	Q03395
Alternative Names	
Background	This gene is a member of a photoreceptor-specific gene family and encodes an integral membrane protein found in the photoreceptor disk rim of the eye. This protein can form homodimers or can heterodimerize with another photoreceptor, retinal degeneration slow (RDS). It is essential for disk



morphogenesis, and may also function as an adhesion molecule involved in the stabilization and compaction of outer segment disks or in the maintenance of the curvature of the rim. Certain defects in this gene have been associated with the degenerative eye disease retinitis pigmentosa. [provided by RefSeq, Jul 2008],



Western blot analysis of lysates from CACO2 cells, primary antibody was diluted at 1:1000, 4°over night

