

SG11A rabbit pAb

Cat No.:ES13140

For research use only

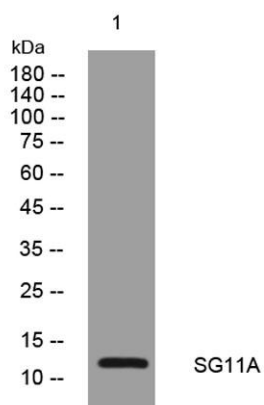
Overview

Product Name	SG11A rabbit pAb
Host species	Rabbit
Applications	WB
Species Cross-Reactivity	Human;Rat;Mouse;
Recommended dilutions	WB 1: 500-2000
Immunogen	Synthesized peptide derived from human SG11A AA range: 56-106
Specificity	This antibody detects endogenous levels of SG11A at Human
Formulation	Liquid in PBS containing 50% glycerol, 0.5% BSA and 0.02% sodium azide.
Storage	Store at -20°C. Avoid repeated freeze-thaw cycles.
Protein Name	SG11A
Gene Name	SPAG11A EP2 HE2
Cellular localization	Secreted .
Purification	The antibody was affinity-purified from rabbit antiserum by affinity-chromatography using epitope-specific immunogen.
Clonality	Polyclonal
Concentration	1 mg/ml
Observed band	
Human Gene ID	10407
Human Swiss-Prot Number	Q6PDA7
Alternative Names	
Background	This gene encodes several androgen-dependent, epididymis-specific secretory proteins. The specific functions of these proteins have not been determined, but they are thought to be involved in sperm maturation. Some of the isoforms contain regions of similarity to beta-defensins, a family of antimicrobial peptides. The gene is located on chromosome 8p23 near the defensin gene cluster. Alternative splicing of this gene results in seven





transcript variants encoding different isoforms. Two different N-terminal and five different C-terminal protein sequences are encoded by the splice variants. Two additional variants have been described, but their full length sequences have not been determined. [provided by RefSeq, Jul 2008],



Western blot analysis of lysates from 293T cells, primary antibody was diluted at 1:1000, 4° over night

