

# KRBA1 rabbit pAb

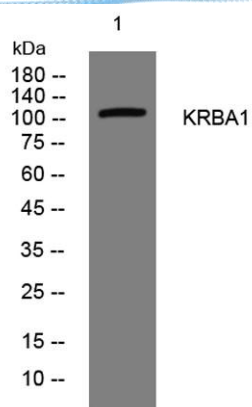
Cat No.:ES15245

For research use only

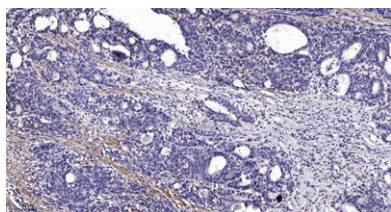
## Overview

Product Name	KRBA1 rabbit pAb
Host species	Rabbit
Applications	WB;ELISA;IHC
Species Cross-Reactivity	Human; Mouse
Recommended dilutions	WB 1:500-2000;IHC-p 1:50-300; ELISA 2000-20000
Immunogen	Synthesized peptide derived from human KRBA1 AA range: 738-788
Specificity	This antibody detects endogenous levels of KRBA1 at Human/Mouse
Formulation	Liquid in PBS containing 50% glycerol, 0.5% BSA and 0.02% sodium azide.
Storage	Store at -20°C. Avoid repeated freeze-thaw cycles.
Protein Name	KRBA1
Gene Name	KRBA1 KIAA1862
Cellular localization	intracellular,
Purification	The antibody was affinity-purified from rabbit antiserum by affinity-chromatography using epitope-specific immunogen.
Clonality	Polyclonal
Concentration	1 mg/ml
Observed band	
Human Gene ID	84626
Human Swiss-Prot Number	A5PL33
Alternative Names	
Background	





Western blot analysis of lysates from HEK293 cells,  
primary antibody was diluted at 1:1000, 4° over night



Immunohistochemical analysis of paraffin-embedded  
human Gastric adenocarcinoma. 1, Antibody was diluted  
at 1:200(4° overnight). 2, Tris-EDTA,pH9.0 was used for  
antigen retrieval. 3,Secondary antibody was diluted at  
1:200(room temperature, 45min).

