

# PRAS40 (phospho-Ser183) rabbit pAb

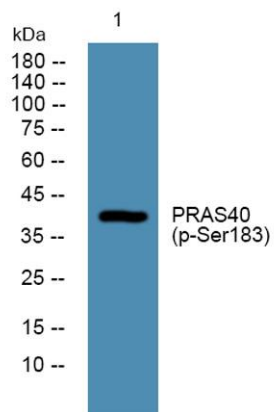
Cat No.:ES13968

For research use only

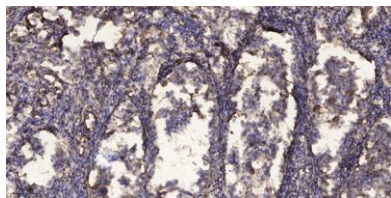
## Overview

Product Name	PRAS40 (phospho-Ser183) rabbit pAb
Host species	Rabbit
Applications	WB;ELISA;IHC
Species Cross-Reactivity	Human;Mouse
Recommended dilutions	WB 1:500-2000;IHC-p 1:50-300; ELISA 2000-20000
Immunogen	Synthesized phospho peptide around human PRAS40 (Ser183)
Specificity	This antibody detects endogenous levels of Human Mouse PRAS40 (phospho-Ser183)
Formulation	Liquid in PBS containing 50% glycerol, 0.5% BSA and 0.02% sodium azide.
Storage	Store at -20°C. Avoid repeated freeze-thaw cycles.
Protein Name	PRAS40 (Ser183)
Gene Name	AKT1S1 PRAS40
Cellular localization	Cytoplasm, cytosol . Found in the cytosolic fraction of the brain. .
Purification	The antibody was affinity-purified from rabbit antiserum by affinity-chromatography using epitope-specific immunogen.
Clonality	Polyclonal
Concentration	1 mg/ml
Observed band	40kD
Human Gene ID	84335
Human Swiss-Prot Number	Q96B36
Alternative Names	Proline-rich AKT1 substrate 1 (40 kDa proline-rich AKT substrate)
Background	AKT1S1 is a proline-rich substrate of AKT (MIM 164730) that binds 14-3-3 protein (see YWHAH, MIM 113508) when phosphorylated (Kovacina et al., 2003 [PubMed 12524439]).[supplied by OMIM, Mar 2008],





Western blot analysis of lysates from U2OS cells, primary antibody was diluted at 1:1000, 4° over night



Immunohistochemical analysis of paraffin-embedded human Squamous cell carcinoma of lung. 1, Antibody was diluted at 1:200(4° overnight). 2, Tris-EDTA,pH9.0 was used for antigen retrieval. 3,Secondary antibody was diluted at 1:200(room temperature, 45min).

