

# mScarlet Rabbit pAb

Cat No.:ES20868

For research use only

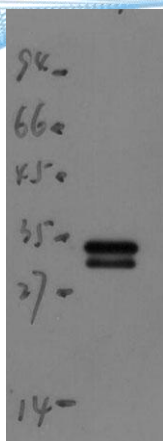
## Overview

Product Name	mScarlet Rabbit pAb
Host species	Rabbit
Applications	IHC;WB
Species Cross-Reactivity	All
Recommended dilutions	IHC-p1:50-200 ,WB 1:1000-2000
Immunogen	Synthesized peptide derived from mScarlet
Specificity	This antibody detects endogenous levels of mScarlet
Formulation	Liquid in PBS containing 50% glycerol, 0.5% BSA and 0.02% sodium azide.
Storage	Store at -20°C. Avoid repeated freeze-thaw cycles.
Protein Name	mScarlet
Gene Name	
Cellular localization	
Purification	The antibody was affinity-purified from rabbit antiserum by affinity-chromatography using epitope-specific immunogen.
Clonality	Polyclonal
Concentration	1 mg/ml
Observed band	
Human Gene ID	
Human Swiss-Prot Number	
Alternative Names	YM33120
Background	mScarlet: a bright monomeric red fluorescent protein for cellular imaging.

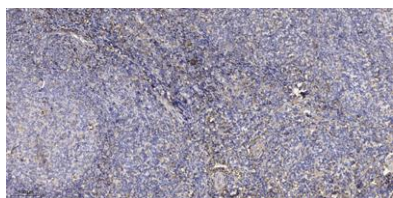




**ELK Biotechnology**



Western blot analysis of mScarlet recombinant transfected 293T Cell Lysate using mScarlet Rabbit Polyclonal Ab diluted at 1:2,000.



Immunohistochemical analysis of paraffin-embedded human tonsil. 1, Antibody was diluted at 1:200(4° overnight). 2, Tris-EDTA,pH9.0 was used for antigen retrieval. 3,Secondary antibody was diluted at 1:200(room temperature, 30min).



+86-27-59760950

[ELKbio@ELKbiotech.com](mailto:ELKbio@ELKbiotech.com)

[www.elkbiotech.com](http://www.elkbiotech.com)

23-2, No.388 Gaoxin 2nd Road,Wuhan East Lake Hi-tech Development Zone, Hubei , P.R.C