

# TM199 rabbit pAb

Cat No.:ES12665

For research use only

## Overview

Product Name	TM199 rabbit pAb
Host species	Rabbit
Applications	WB
Species Cross-Reactivity	Human; Mouse;Rat
Recommended dilutions	WB 1: 500-2000
Immunogen	Synthesized peptide derived from human TM199 AA range: 38-88
Specificity	This antibody detects endogenous levels of TM199 at Human/Mouse/Rat
Formulation	Liquid in PBS containing 50% glycerol, 0.5% BSA and 0.02% sodium azide.
Storage	Store at -20°C. Avoid repeated freeze-thaw cycles.
Protein Name	TM199
Gene Name	TMEM199 C17orf32
Cellular localization	Cytoplasmic vesicle, COPI-coated vesicle membrane ; Multi-pass membrane protein . Endoplasmic reticulum-Golgi intermediate compartment membrane ; Multi-pass membrane protein . Endoplasmic reticulum membrane ; Multi-pass membrane protein . Partial colocali
Purification	The antibody was affinity-purified from rabbit antiserum by affinity-chromatography using epitope-specific immunogen.
Clonality	Polyclonal
Concentration	1 mg/ml
Observed band	
Human Gene ID	147007
Human Swiss-Prot Number	Q8N511
Alternative Names	
Background	The protein encoded by this gene has been observed to localize to the endoplasmic reticulum (ER)-Golgi intermediate compartment (ERGIC) and coat protein complex I (COPI) in some human cells.

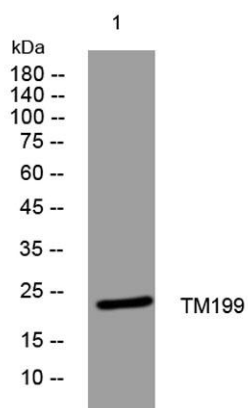




**ELK Biotechnology**

The encoded protein shares some homology with the yeast protein Vma12. Defects in this gene are a cause of congenital disorder of glycosylation, type IIp. [provided by RefSeq, Mar 2016],

Western blot analysis of lysates from U2OS cells, primary antibody was diluted at 1:1000, 4° over night



+86-27-59760950

ELKbio@ELKbiotech.com

[www.elkbiotech.com](http://www.elkbiotech.com)

23-2, No.388 Gaoxin 2nd Road, Wuhan East Lake Hi-tech Development Zone, Hubei, P.R.C.