

OST48 rabbit pAb

Cat No.:ES14360

For research use only

Overview

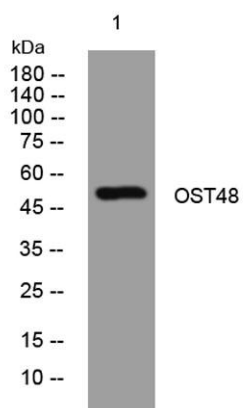
| | |
|--------------------------|--|
| Product Name | OST48 rabbit pAb |
| Host species | Rabbit |
| Applications | WB |
| Species Cross-Reactivity | Human; Mouse;Rat |
| Recommended dilutions | WB 1: 500-2000 |
| Immunogen | Synthesized peptide derived from human OST48 AA range: 54-104 |
| Specificity | This antibody detects endogenous levels of OST48 at Human/Mouse/Rat |
| Formulation | Liquid in PBS containing 50% glycerol, 0.5% BSA and 0.02% sodium azide. |
| Storage | Store at -20°C. Avoid repeated freeze-thaw cycles. |
| Protein Name | OST48 |
| Gene Name | DDOST KIAA0115 OST48 OK/SW-cl.45 |
| Cellular localization | Endoplasmic reticulum membrane ; Single-pass type I membrane protein . |
| Purification | The antibody was affinity-purified from rabbit antiserum by affinity-chromatography using epitope-specific immunogen. |
| Clonality | Polyclonal |
| Concentration | 1 mg/ml |
| Observed band | |
| Human Gene ID | 1650 |
| Human Swiss-Prot Number | P39656 |
| Alternative Names | |
| Background | This gene encodes a component of the oligosaccharyltransferase complex which catalyzes the transfer of high-mannose oligosaccharides to asparagine residues on nascent polypeptides in the lumen of the rough endoplasmic reticulum. The protein complex co-purifies with ribosomes. The product of this gene is also implicated in the processing of advanced glycation endproducts |





ELK Biotechnology

(AGEs), which form from non-enzymatic reactions between sugars and proteins or lipids and are associated with aging and hyperglycemia. [provided by RefSeq, Jul 2008],



Western blot analysis of lysates from KB cells, primary antibody was diluted at 1:1000, 4° over night



+86-27-59760950

ELKbio@ELKbiotech.com

www.elkbiotech.com

23-2, No.388 Gaoxin 2nd Road, Wuhan East Lake Hi-tech Development Zone, Hubei, P.R.C.