

# P12L2 rabbit pAb

Cat No.:ES14341

For research use only

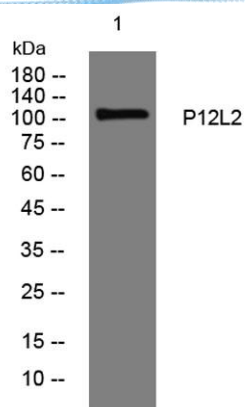
## Overview

Product Name	P12L2 rabbit pAb
Host species	Rabbit
Applications	WB
Species Cross-Reactivity	Human; Mouse
Recommended dilutions	WB 1:500-2000
Immunogen	Synthesized peptide derived from human P12L2 AA range: 555-605
Specificity	This antibody detects endogenous levels of P12L2 at Human/Mouse
Formulation	Liquid in PBS containing 50% glycerol, 0.5% BSA and 0.02% sodium azide.
Storage	Store at -20°C. Avoid repeated freeze-thaw cycles.
Protein Name	P12L2
Gene Name	POM121L2 POM121L
Cellular localization	nuclear pore,nuclear pore central transport channel,nuclear pore nuclear basket,
Purification	The antibody was affinity-purified from rabbit antiserum by affinity-chromatography using epitope-specific immunogen.
Clonality	Polyclonal
Concentration	1 mg/ml
Observed band	105kD
Human Gene ID	
Human Swiss-Prot Number	Q96KW2
Alternative Names	POM121-like protein 2
Background	





**ELK Biotechnology**



Western blot analysis of lysates from MCF-7 cells, primary antibody was diluted at 1:1000, 4° over night



+86-27-59760950

ELKbio@ELKbiotech.com

[www.elkbiotech.com](http://www.elkbiotech.com)

23-2, No.388 Gaoxin 2nd Road, Wuhan East Lake Hi-tech Development Zone, Hubei, P.R.C.