

SHIP2 (phospho-Tyr986/987) rabbit pAb

Cat No.:ES13120

For research use only

Overview

Product Name	SHIP2 (phospho-Tyr986/987) rabbit pAb
Host species	Rabbit
Applications	WB;ELISA;IHC
Species Cross-Reactivity	Human;Rat;Mouse;
Recommended dilutions	WB 1:500-2000;IHC-p 1:50-300; ELISA 2000-20000
Immunogen	Synthesized phospho peptide around human SHIP2 (Tyr986 and 987)
Specificity	This antibody detects endogenous levels of Human SHIP2 (phospho-Tyr986 or 987)
Formulation	Liquid in PBS containing 50% glycerol, 0.5% BSA and 0.02% sodium azide.
Storage	Store at -20°C. Avoid repeated freeze-thaw cycles.
Protein Name	SHIP2 (Tyr986/987)
Gene Name	INPPL1 SHIP2
Cellular localization	Cytoplasm, cytosol . Cytoplasm, cytoskeleton. Membrane ; Peripheral membrane protein. Cell projection, filopodium . Cell projection, lamellipodium . Nucleus . Nucleus speckle . Translocates to membrane ruffles when activated, translocation is probably due
Purification	The antibody was affinity-purified from rabbit antiserum by affinity-chromatography using epitope-specific immunogen.
Clonality	Polyclonal
Concentration	1 mg/ml
Observed band	130kD
Human Gene ID	3636
Human Swiss-Prot Number	O15357
Alternative Names	Phosphatidylinositol 3,4,5-trisphosphate 5-phosphatase 2 (EC 3.1.3.86) (Inositol polyphosphate phosphatase-like protein 1) (INPPL-1) (Protein 51C) (SH2 domain-containing inositol 5'-phosphatase 2) (SH2 domain-containing inositol

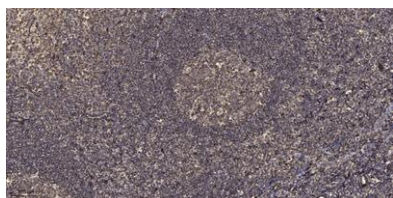




Background

phosphatase 2) (SHIP-2)

The protein encoded by this gene is an SH2-containing 5'-inositol phosphatase that is involved in the regulation of insulin function. The encoded protein also plays a role in the regulation of epidermal growth factor receptor turnover and actin remodelling. Additionally, this gene supports metastatic growth in breast cancer and is a valuable biomarker for breast cancer. [provided by RefSeq, Jan 2009],



Immunohistochemical analysis of paraffin-embedded human tonsil. 1, Antibody was diluted at 1:200(4° overnight). 2, Tris-EDTA,pH9.0 was used for antigen retrieval. 3,Secondary antibody was diluted at 1:200(room temperature, 45min).

