

# ADCYA rabbit pAb

Cat No.:ES18455

For research use only

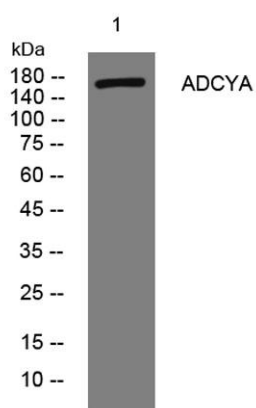
## Overview

Product Name	ADCYA rabbit pAb
Host species	Rabbit
Applications	WB
Species Cross-Reactivity	Human; Mouse;Rat
Recommended dilutions	WB 1: 500-2000
Immunogen	Synthesized peptide derived from human ADCYA AA range: 368-418
Specificity	This antibody detects endogenous levels of ADCYA at Human/Mouse/Rat
Formulation	Liquid in PBS containing 50% glycerol, 0.5% BSA and 0.02% sodium azide.
Storage	Store at -20°C. Avoid repeated freeze-thaw cycles.
Protein Name	ADCYA
Gene Name	ADCY10 SAC
Cellular localization	Cell membrane ; Peripheral membrane protein ; Cytoplasmic side . Cytoplasm, cytoskeleton . Cytoplasm, perinuclear region . Nucleus . Cell projection, cilium . Cytoplasm . Mitochondrion . Distributed to subcellular compartments containing cAMP targets. Fou
Purification	The antibody was affinity-purified from rabbit antiserum by affinity-chromatography using epitope-specific immunogen.
Clonality	Polyclonal
Concentration	1 mg/ml
Observed band	
Human Gene ID	55811
Human Swiss-Prot Number	Q96PN6
Alternative Names	
Background	The protein encoded by this gene belongs to a distinct class of adenylyl cyclases that is soluble and insensitive to G protein or forskolin regulation. Activity of this protein is regulated by bicarbonate.





Variation at this gene has been observed in patients with absorptive hypercalciuria. Alternatively spliced transcript variants encoding different isoforms have been observed. There is a pseudogene of this gene on chromosome 6. [provided by RefSeq, Jul 2014],



Western blot analysis of lysates from KB cells, primary antibody was diluted at 1:1000, 4° over night

