

# KR105 rabbit pAb

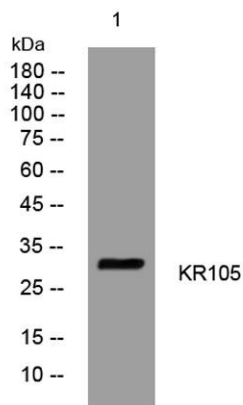
Cat No.:ES15268

For research use only

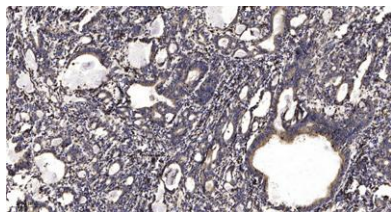
## Overview

Product Name	KR105 rabbit pAb
Host species	Rabbit
Applications	WB;ELISA;IHC
Species Cross-Reactivity	Human;Rat;Mouse;
Recommended dilutions	WB 1:500-2000;IHC-p 1:50-300; ELISA 2000-20000
Immunogen	Synthesized peptide derived from human KR105 AA range: 88-138
Specificity	This antibody detects endogenous levels of KR105 at Human
Formulation	Liquid in PBS containing 50% glycerol, 0.5% BSA and 0.02% sodium azide.
Storage	Store at -20°C. Avoid repeated freeze-thaw cycles.
Protein Name	KR105
Gene Name	KRTAP10-5 KAP10.5 KAP18-5 KRTAP10.5 KRTAP18-5 KRTAP18.5
Cellular localization	keratin filament,
Purification	The antibody was affinity-purified from rabbit antiserum by affinity-chromatography using epitope-specific immunogen.
Clonality	Polyclonal
Concentration	1 mg/ml
Observed band	
Human Gene ID	386680
Human Swiss-Prot Number	P60370
Alternative Names	
Background	This is an intronless gene located in a cluster of related genes on the q arm of chromosome 21. The proteins encoded by these genes form disulfide bonds with cysteine residues in hair keratins, thereby contributing to the structure and stability of hair fibers. [provided by RefSeq, Apr 2014],





Western blot analysis of lysates from HeLa cells, primary antibody was diluted at 1:1000, 4° over night



Immunohistochemical analysis of paraffin-embedded human Gastric adenocarcinoma. 1, Antibody was diluted at 1:200(4° overnight). 2, Tris-EDTA, pH9.0 was used for antigen retrieval. 3, Secondary antibody was diluted at 1:200(room temperature, 45min).

