

## FKBP1A/B rabbit pAb

Cat No.:ES16393

For research use only

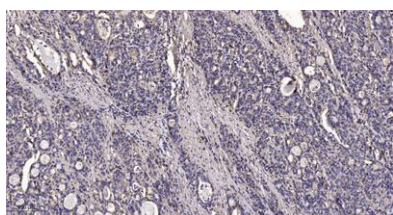
### Overview

Product Name	FKBP1A/B rabbit pAb
Host species	Rabbit
Applications	IHC;IF;WB
Species Cross-Reactivity	Human; Mouse; Rat
Recommended dilutions	IHC-p 1:50-200, WB 1:500-2000
Immunogen	Synthesized peptide derived from human FKBP1A/B AA range: 26-75
Specificity	This antibody detects endogenous levels of human FKBP1A/B
Formulation	Liquid in PBS containing 50% glycerol, 0.5% BSA and 0.02% sodium azide.
Storage	Store at -20°C. Avoid repeated freeze-thaw cycles.
Protein Name	FKBP1A/B
Gene Name	
Cellular localization	Cytoplasm, cytosol . Sarcoplasmic reticulum membrane ; Peripheral membrane protein ; Cytoplasmic side .
Purification	The antibody was affinity-purified from rabbit antiserum by affinity-chromatography using epitope-specific immunogen.
Clonality	Polyclonal
Concentration	1 mg/ml
Observed band	130kD
Human Gene ID	2280/2281
Human Swiss-Prot Number	P62942/P68106
Alternative Names	
Background	The protein encoded by this gene is a member of the immunophilin protein family, which play a role in immunoregulation and basic cellular processes involving protein folding and trafficking. The protein is a cis-trans prolyl isomerase that binds the immunosuppressants FK506 and rapamycin. It interacts with several intracellular signal





transduction proteins including type I TGF-beta receptor. It also interacts with multiple intracellular calcium release channels, and coordinates multi-protein complex formation of the tetrameric skeletal muscle ryanodine receptor. In mouse, deletion of this homologous gene causes congenital heart disorder known as noncompaction of left ventricular myocardium. Multiple alternatively spliced variants, encoding the same protein, have been identified. The human genome contains five pseudogenes related to this gene, at least one of which is transcribed. [provided b



Immunohistochemical analysis of paraffin-embedded human Gastric adenocarcinoma. 1, Antibody was diluted at 1:200(4° overnight). 2, Tris-EDTA,pH9.0 was used for antigen retrieval. 3,Secondary antibody was diluted at 1:200(room temperature, 45min).

