

# LX15B rabbit pAb

Cat No.:ES15076

For research use only

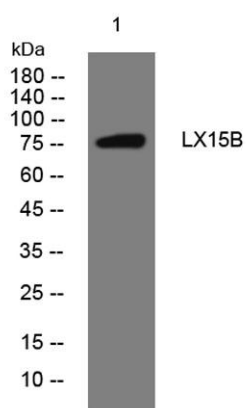
## Overview

Product Name	LX15B rabbit pAb
Host species	Rabbit
Applications	WB
Species Cross-Reactivity	Human; Mouse;Rat
Recommended dilutions	WB 1: 500-2000
Immunogen	Synthesized peptide derived from human LX15B AA range: 576-626
Specificity	This antibody detects endogenous levels of LX15B at Human/Mouse/Rat
Formulation	Liquid in PBS containing 50% glycerol, 0.5% BSA and 0.02% sodium azide.
Storage	Store at -20°C. Avoid repeated freeze-thaw cycles.
Protein Name	LX15B
Gene Name	ALOX15B
Cellular localization	[Isoform A]: Nucleus . Other isoforms are excluded from the nucleus. .; Cytoplasm, cytosol . Cell membrane . Cytoplasm, cytoskeleton . Membrane ; Peripheral membrane protein . Cell junction, adherens junction . Cell junction, focal adhesion . Predominantl
Purification	The antibody was affinity-purified from rabbit antiserum by affinity-chromatography using epitope-specific immunogen.
Clonality	Polyclonal
Concentration	1 mg/ml
Observed band	
Human Gene ID	247
Human Swiss-Prot Number	O15296
Alternative Names	
Background	This gene encodes a member of the lipoxygenase family of structurally related nonheme iron dioxygenases involved in the production of fatty acid hydroperoxides. The encoded protein converts





arachidonic acid exclusively to 15S-hydroperoxyeicosatetraenoic acid, while metabolizing linoleic acid less effectively. This gene is located in a cluster of related genes and a pseudogene that spans approximately 100 kilobases on the short arm of chromosome 17. Alternatively spliced transcript variants encoding different isoforms have been described. [provided by RefSeq, Jul 2008],



Western blot analysis of lysates from MCF-7 cells, primary antibody was diluted at 1:1000, 4° over night

