

# S26A7 rabbit pAb

Cat No.:ES13249

For research use only

## Overview

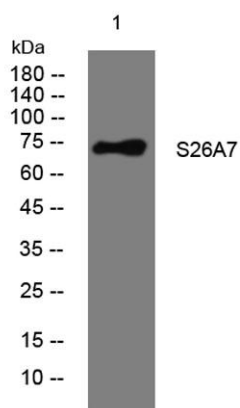
Product Name	S26A7 rabbit pAb
Host species	Rabbit
Applications	WB
Species Cross-Reactivity	Human; Mouse
Recommended dilutions	WB 1: 500-2000
Immunogen	Synthesized peptide derived from human S26A7 AA range: 595-645
Specificity	This antibody detects endogenous levels of S26A7 at Human/Mouse
Formulation	Liquid in PBS containing 50% glycerol, 0.5% BSA and 0.02% sodium azide.
Storage	Store at -20°C. Avoid repeated freeze-thaw cycles.
Protein Name	S26A7
Gene Name	SLC26A7 SUT2
Cellular localization	Recycling endosome membrane ; Multi-pass membrane protein . Expressed in the cytoplasm in recycling endosomes of medullary collecting duct cells and in acid-secreting gastric parietal cells. Targeted to the basolateral membrane in hypertonicity and potass
Purification	The antibody was affinity-purified from rabbit antiserum by affinity-chromatography using epitope-specific immunogen.
Clonality	Polyclonal
Concentration	1 mg/ml
Observed band	
Human Gene ID	115111
Human Swiss-Prot Number	Q8TE54
Alternative Names	
Background	This gene is one member of a family of sulfate/anion transporter genes. Family members are well conserved in gene structure and protein length yet have markedly different tissue expression patterns.





**ELK Biotechnology**

This gene has abundant and specific expression in the kidney. Alternatively spliced transcript variants that encode different isoforms have been described. [provided by RefSeq, Aug 2013],



Western blot analysis of lysates from HpeG2 cells, primary antibody was diluted at 1:1000, 4° over night



+86-27-59760950

[ELKbio@ELKbiotech.com](mailto:ELKbio@ELKbiotech.com)

[www.elkbiotech.com](http://www.elkbiotech.com)

23-2, No.388 Gaoxin 2nd Road, Wuhan East Lake Hi-tech Development Zone, Hubei, P.R.C.