

# TINAG rabbit pAb

Cat No.:ES12693

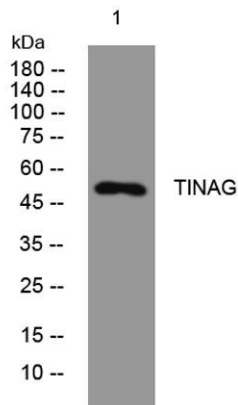
For research use only

## Overview

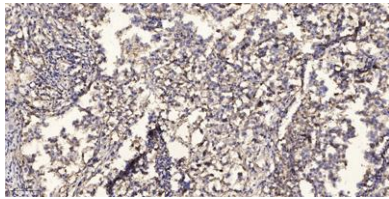
Product Name	TINAG rabbit pAb
Host species	Rabbit
Applications	WB;IHC
Species Cross-Reactivity	Human;Rat;Mouse;
Recommended dilutions	WB 1:500-2000;IHC-p 1:50-300
Immunogen	Synthesized peptide derived from human TINAG AA range: 80-130
Specificity	This antibody detects endogenous levels of TINAG at Human
Formulation	Liquid in PBS containing 50% glycerol, 0.5% BSA and 0.02% sodium azide.
Storage	Store at -20°C. Avoid repeated freeze-thaw cycles.
Protein Name	TINAG
Gene Name	TINAG
Cellular localization	Secreted, extracellular space, extracellular matrix, basement membrane .
Purification	The antibody was affinity-purified from rabbit antiserum by affinity-chromatography using epitope-specific immunogen.
Clonality	Polyclonal
Concentration	1 mg/ml
Observed band	
Human Gene ID	27283
Human Swiss-Prot Number	Q9UJW2
Alternative Names	
Background	This gene encodes a glycoprotein that is restricted within the kidney to the basement membranes underlying the epithelium of Bowman's capsule and proximal and distal tubules. Autoantibodies against this protein are found in sera of patients with tubulointerstitial nephritis, membranous nephropathy and anti-glomerular basement membrane nephritis. Ontogeny studies suggest that



the expression of this antigen is developmentally regulated in a precise spatial and temporal pattern throughout nephrogenesis. [provided by RefSeq, Nov 2011],



Western blot analysis of lysates from K562 cells, primary antibody was diluted at 1:1000, 4° over night



Immunohistochemical analysis of paraffin-embedded human Squamous cell carcinoma of lung. 1, Antibody was diluted at 1:200(4° overnight). 2, Tris-EDTA,pH9.0 was used for antigen retrieval. 3,Secondary antibody was diluted at 1:200(room temperature, 45min).

