

ACTT1 rabbit pAb

Cat No.:ES18466

For research use only

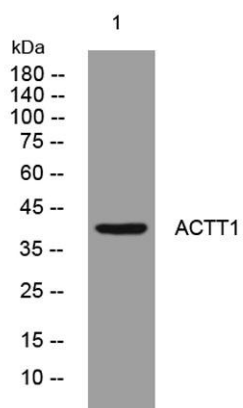
Overview

Product Name	ACTT1 rabbit pAb
Host species	Rabbit
Applications	WB
Species Cross-Reactivity	Human; Mouse;Rat
Recommended dilutions	WB 1: 500-2000
Immunogen	Synthesized peptide derived from human ACTT1 AA range: 241-291
Specificity	This antibody detects endogenous levels of ACTT1 at Human/Mouse/Rat
Formulation	Liquid in PBS containing 50% glycerol, 0.5% BSA and 0.02% sodium azide.
Storage	Store at -20°C. Avoid repeated freeze-thaw cycles.
Protein Name	ACTT1
Gene Name	ACTRT1 ARPT1 HSD27
Cellular localization	Cytoplasm, cytoskeleton . Cytoplasm . Nucleus . Both detected in the nucleus and cytoplasm, localizes to the nucleus where it binds chromatin upon stimulation of the Hedgehog pathway. .
Purification	The antibody was affinity-purified from rabbit antiserum by affinity-chromatography using epitope-specific immunogen.
Clonality	Polyclonal
Concentration	1 mg/ml
Observed band	
Human Gene ID	139741
Human Swiss-Prot Number	Q8TDG2
Alternative Names	
Background	This gene encodes a protein related to the cytoskeletal protein beta-actin. This protein is a major component of the calyx in the perinuclear theca of mammalian sperm heads, and it therefore likely functions in spermatid formation. This gene is intronless and is similar to a related gene located on





chromosome 1. A related pseudogene has also been identified approximately 75 kb downstream of this gene on chromosome X. [provided by RefSeq, May 2010],



Western blot analysis of lysates from 293T cells, primary antibody was diluted at 1:1000, 4° over night

