

HMG-I/HMG-Y Polyclona Antibody

Cat No.:ES15695

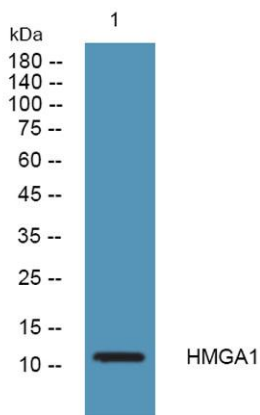
For research use only

Overview

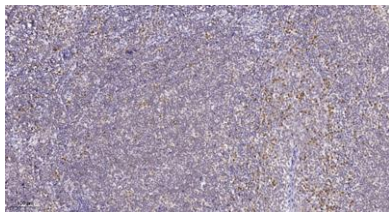
| | |
|--------------------------|--|
| Product Name | HMG-I/HMG-Y Polyclona Antibody |
| Host species | Rabbit |
| Applications | WB;IHC;IF;ELISA |
| Species Cross-Reactivity | Human; Mouse; Rat |
| Recommended dilutions | Western Blot: 1/500 - 1/2000. Immunohistochemistry: 1/100 - 1/300. Immunofluorescence: 1/200 - 1/1000. ELISA: 1/5000. Not yet tested in other applications. |
| Immunogen | Synthesized peptide derived from human HMG-I/HMG-Y . AA20-60 |
| Specificity | This antibody detects endogenous levels of human HMG-I/HMG-Y |
| Formulation | Liquid in PBS containing 50% glycerol, 0.5% BSA and 0.02% sodium azide. |
| Storage | Store at -20°C. Avoid repeated freeze-thaw cycles. |
| Protein Name | HMG-I/HMG-Y |
| Gene Name | HMGA1 HMGIY |
| Cellular localization | Nucleus. Chromosome. |
| Purification | The antibody was affinity-purified from rabbit antiserum by affinity-chromatography using epitope-specific immunogen. |
| Clonality | Polyclonal |
| Concentration | 1 mg/ml |
| Observed band | |
| Human Gene ID | 3159 |
| Human Swiss-Prot Number | P17096 |
| Alternative Names | High mobility group protein HMG-I/HMG-Y (HMG-I(Y);High mobility group AT-hook protein 1;High mobility group protein A1;High mobility group protein R) |
| Background | This gene encodes a chromatin-associated protein involved in the regulation of gene transcription, integration of retroviruses into chromosomes, and |



the metastatic progression of cancer cells. The encoded protein preferentially binds to the minor groove of AT-rich regions in double-stranded DNA. Multiple transcript variants encoding different isoforms have been found for this gene. Pseudogenes of this gene have been identified on multiple chromosomes. [provided by RefSeq, Jan 2016],



Western blot analysis of lysates from K562 cells, primary antibody was diluted at 1:1000, 4° over night



Immunohistochemical analysis of paraffin-embedded human tonsil. 1, Tris-EDTA, pH 9.0 was used for antigen retrieval. 2 Antibody was diluted at 1:200 (4° overnight). 3, Secondary antibody was diluted at 1:200 (room temperature, 45 min).

