

MEX3B rabbit pAb

Cat No.:ES14958

For research use only

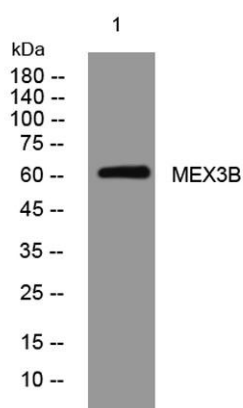
Overview

Product Name	MEX3B rabbit pAb
Host species	Rabbit
Applications	WB
Species Cross-Reactivity	Human; Mouse
Recommended dilutions	WB 1:500-2000
Immunogen	Synthesized peptide derived from human MEX3B AA range: 434-484
Specificity	This antibody detects endogenous levels of MEX3B at Human/Mouse
Formulation	Liquid in PBS containing 50% glycerol, 0.5% BSA and 0.02% sodium azide.
Storage	Store at -20°C. Avoid repeated freeze-thaw cycles.
Protein Name	MEX3B
Gene Name	MEX3B KIAA2009 RKHD3 RNF195
Cellular localization	Nucleus . Cytoplasm . Cytoplasm, P-body . Cytoplasmic granule . Predominantly expressed in the cytoplasm and shuttles between the cytoplasm and the nucleus through the CRM1 export pathway. Localization to P-bodies is dependent on 14-3-3.
Purification	The antibody was affinity-purified from rabbit antiserum by affinity-chromatography using epitope-specific immunogen.
Clonality	Polyclonal
Concentration	1 mg/ml
Observed band	60kD
Human Gene ID	84206
Human Swiss-Prot Number	Q6ZN04
Alternative Names	RNA-binding protein MEX3B (RING finger and KH domain-containing protein 3) (RING finger protein 195)
Background	This gene encodes an RNA-binding phosphoprotein that is part of the MEX3 (muscle excess 3) family of translational regulators. The encoded protein





contains N-terminal nuclear export and nuclear localization signals and is exported from the cytoplasm to the nucleus. The protein binds to RNA via two KH domains and also colocalizes with MEX3A, Dcp1A decapping factor and Argonaute proteins within P (processing) bodies. [provided by RefSeq, Oct 2012],



Western blot analysis of lysates from PC-12 cells, primary antibody was diluted at 1:1000, 4°over night

