

# Kallikrein-7 (Cleaved-Ile30) rabbit pAb

Cat No.:ES20020

For research use only

## Overview

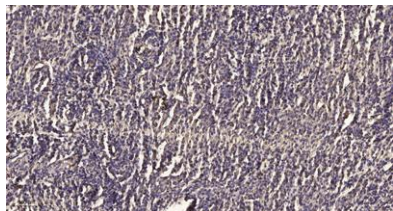
Product Name	Kallikrein-7 (Cleaved-Ile30) rabbit pAb
Host species	Rabbit
Applications	WB;IHC
Species Cross-Reactivity	Human;Mouse;Rat
Recommended dilutions	WB 1:500-2000;IHC-p 1:50-300
Immunogen	Synthesized peptide derived from human Kallikrein-7 (Cleaved-Ile30)
Specificity	This antibody detects endogenous levels of Human,Mouse,Rat Kallikrein-7 (Cleaved-Ile30, protein was cleaved amino acid sequence between 29-30 )
Formulation	Liquid in PBS containing 50% glycerol, 0.5% BSA and 0.02% sodium azide.
Storage	Store at -20°C. Avoid repeated freeze-thaw cycles.
Protein Name	Kallikrein-7 (Cleaved-Ile30)
Gene Name	KLK7 PRSS6 SCCE
Cellular localization	Secreted . In ovarian carcinoma, secreted and also observed at the apical membrane and in cytoplasm at the invasive front.
Purification	The antibody was affinity-purified from rabbit antiserum by affinity-chromatography using epitope-specific immunogen.
Clonality	Polyclonal
Concentration	1 mg/ml
Observed band	25kD
Human Gene ID	5650
Human Swiss-Prot Number	P49862
Alternative Names	Kallikrein-7 (hK7;EC 3.4.21.117;Serine protease 6;Stratum corneum chymotryptic enzyme;hSCCE)
Background	







**ELK Biotechnology**



Immunohistochemical analysis of paraffin-embedded human meningioma. 1, Antibody was diluted at 1:200(4° overnight). 2, Tris-EDTA,pH9.0 was used for antigen retrieval. 3,Secondary antibody was diluted at 1:200(room temperature, 45min).



+86-27-59760950

ELKbio@ELKbiotech.com

[www.elkbiotech.com](http://www.elkbiotech.com)

23-2, No.388 Gaoxin 2nd Road,Wuhan East Lake Hi-tech Development Zone, Hubei , P.R.C