

PRS55 rabbit pAb

Cat No.:ES13900

For research use only

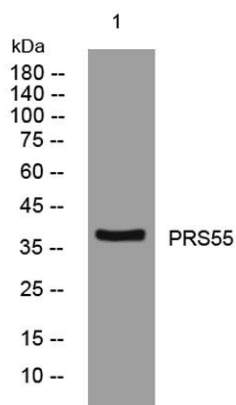
Overview

Product Name	PRS55 rabbit pAb
Host species	Rabbit
Applications	WB
Species Cross-Reactivity	Human; Mouse
Recommended dilutions	WB 1:500-2000
Immunogen	Synthesized peptide derived from human PRS55 AA range: 173-223
Specificity	This antibody detects endogenous levels of PRS55 at Human/Mouse
Formulation	Liquid in PBS containing 50% glycerol, 0.5% BSA and 0.02% sodium azide.
Storage	Store at -20°C. Avoid repeated freeze-thaw cycles.
Protein Name	PRS55
Gene Name	PRSS5 UNQ9391/PRO34284
Cellular localization	[Isoform 1]: Cell membrane ; Lipid-anchor, GPI-anchor . Cytoplasm, cytosol . Mainly found in the membrane part of the cells and only in small amounts in the cytosol. .; [Isoform 2]: Cytoplasm, cytosol . Present primarily in the cytosol and only in minor a
Purification	The antibody was affinity-purified from rabbit antiserum by affinity-chromatography using epitope-specific immunogen.
Clonality	Polyclonal
Concentration	1 mg/ml
Observed band	38kD
Human Gene ID	203074
Human Swiss-Prot Number	Q6UWB4
Alternative Names	Serine protease 55 (EC 3.4.21.-)
Background	This gene encodes a member of a group of membrane-anchored chymotrypsin (S1)-like serine proteases. The encoded protein is primarily expressed in the Leydig and Sertoli cells of the testis





and may be involved in male fertility. Alternate splicing results in multiple transcript variants. [provided by RefSeq, Sep 2010],



Western blot analysis of lysates from HpeG2 cells, primary antibody was diluted at 1:1000, 4°over night

