

ADA11 rabbit pAb

Cat No.:ES18463

For research use only

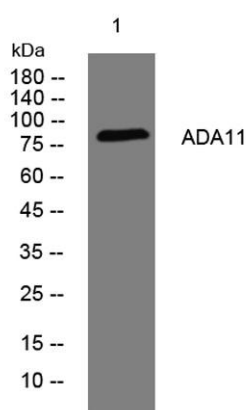
Overview

Product Name	ADA11 rabbit pAb
Host species	Rabbit
Applications	WB
Species Cross-Reactivity	Human; Mouse
Recommended dilutions	WB 1:500-2000
Immunogen	Synthesized peptide derived from human ADA11 AA range: 600-650
Specificity	This antibody detects endogenous levels of ADA11 at Human/Mouse
Formulation	Liquid in PBS containing 50% glycerol, 0.5% BSA and 0.02% sodium azide.
Storage	Store at -20°C. Avoid repeated freeze-thaw cycles.
Protein Name	ADA11
Gene Name	ADAM11 MDC
Cellular localization	Membrane; Single-pass type I membrane protein.
Purification	The antibody was affinity-purified from rabbit antiserum by affinity-chromatography using epitope-specific immunogen.
Clonality	Polyclonal
Concentration	1 mg/ml
Observed band	85kD
Human Gene ID	4185
Human Swiss-Prot Number	O75078
Alternative Names	Disintegrin and metalloproteinase domain-containing protein 11 (ADAM 11) (Metalloproteinase-like, disintegrin-like, and cysteine-rich protein) (MDC)
Background	This gene encodes a member of the ADAM (a disintegrin and metalloprotease) protein family. Members of this family are membrane-anchored proteins structurally related to snake venom disintegrins, and have been implicated in a variety of biological processes involving cell-cell and





cell-matrix interactions, including fertilization, muscle development, and neurogenesis. The encoded preproprotein is proteolytically processed to generate the mature protease. This gene represents a candidate tumor suppressor gene for human breast cancer based on its location within a minimal region of chromosome 17q21 previously defined by tumor deletion mapping. Alternative splicing results in multiple transcript variants, at least one of which encodes an isoform that is proteolytically processed. [provided by RefSeq, Jan 2016],



Western blot analysis of lysates from HpeG2 cells, primary antibody was diluted at 1:1000, 4°over night

