

STING (phospho-Ser366) rabbit pAb

Cat No.:ES12904

For research use only

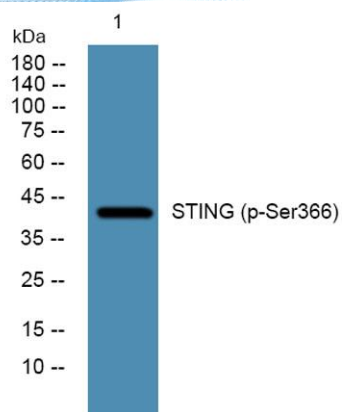
Overview

Product Name	STING (phospho-Ser366) rabbit pAb
Host species	Rabbit
Applications	WB
Species Cross-Reactivity	Human;Rat;Mouse;
Recommended dilutions	WB 1:1000-2000
Immunogen	Synthesized phospho peptide around human STING (Ser366)
Specificity	This antibody detects endogenous levels of Human/Rat STING (phospho-Ser366) or mouse STING (phospho-Ser365)
Formulation	Liquid in PBS containing 50% glycerol, 0.5% BSA and 0.02% sodium azide.
Storage	Store at -20°C. Avoid repeated freeze-thaw cycles.
Protein Name	STING (Ser366)
Gene Name	TMEM173 ERIS MITA STING
Cellular localization	
Purification	The antibody was affinity-purified from rabbit antiserum by affinity-chromatography using epitope-specific immunogen.
Clonality	Polyclonal
Concentration	1 mg/ml
Observed band	38kD
Human Gene ID	
Human Swiss-Prot Number	Q86WV6
Alternative Names	
Background	





ELK Biotechnology



Western blot analysis of lysates from HCT116 cells,
primary antibody was diluted at 1:1000, 4° over night



+86-27-59760950

ELKbio@ELKbiotech.com

www.elkbiotech.com

23-2, No.388 Gaoxin 2nd Road, Wuhan East Lake Hi-tech Development Zone, Hubei, P.R.C.