

WHRN rabbit pAb

Cat No.:ES12303

For research use only

Overview

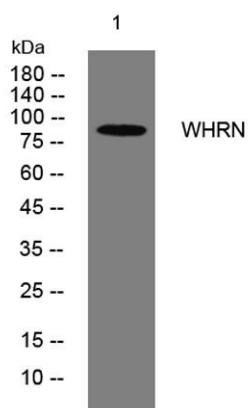
Product Name	WHRN rabbit pAb
Host species	Rabbit
Applications	WB
Species Cross-Reactivity	Human; Mouse;Rat
Recommended dilutions	WB 1: 500-2000
Immunogen	Synthesized peptide derived from human WHRN AA range: 419-469
Specificity	This antibody detects endogenous levels of WHRN at Human/Mouse/Rat
Formulation	Liquid in PBS containing 50% glycerol, 0.5% BSA and 0.02% sodium azide.
Storage	Store at -20°C. Avoid repeated freeze-thaw cycles.
Protein Name	WHRN
Gene Name	WHRN DFNB31 KIAA1526
Cellular localization	Cytoplasm . Cell projection, stereocilium . Cell projection, growth cone . Photoreceptor inner segment . Cell junction, synapse . Detected at the level of stereocilia in inner and outer hair cells of the cochlea and vestibule. Localizes to both tip and an
Purification	The antibody was affinity-purified from rabbit antiserum by affinity-chromatography using epitope-specific immunogen.
Clonality	Polyclonal
Concentration	1 mg/ml
Observed band	
Human Gene ID	25861
Human Swiss-Prot Number	Q9P202
Alternative Names	
Background	This gene is thought to function in the organization and stabilization of stereocilia elongation and actin cytoskeletal assembly, based on studies of the related mouse gene. Mutations in this gene have been associated with autosomal recessive





ELK Biotechnology

non-syndromic deafness and Usher Syndrome.
Alternative splicing of this gene results in multiple
transcript variants encoding different
isoforms.[provided by RefSeq, Mar 2010],



Western blot analysis of lysates from CACO2 cells, primary
antibody was diluted at 1:1000, 4° over night



+86-27-59760950

ELKbio@ELKbiotech.com

www.elkbiotech.com

23-2, No.388 Gaoxin 2nd Road, Wuhan East Lake Hi-tech Development Zone, Hubei, P.R.C.